

CHATHAM COUNTY PURCHASING & CONTRACTING DEPARTMENT

ADDENDUM NO. 2 TO 18-0075-4

FOR: CANEBRAKE ROAD IMPROVEMENTS

PLEASE SEE THE FOLLOWING FOR ADDITIONS, CLARIFICATIONS AND/OR CHANGES:


- 1. SEE ATTACHED SHEET OF QUESTIONS RECEIVED. (1 page)**
- 2. REPLACE CURRENT BID SHEETS WITH THE ATTACHED REVISED BID SHEETS (3 pages)**
- 3. PLAN CHANGES: SEE ATTACHED PLAN REVISION SUMMARY SHEETS (2 pages)**
- 4. REVISED PLAN SHEETS: SEE ATTACHED REVISED PLAN SHEETS (17 plan sheets)**
04-001, 05-001, 05-002, 05-003, 05-004, 05-005, 05-006, 05-007 06-001, 06-003, 13-002, 13-003, 13-007, 17-001, 17-002, 17-003, 26-008.

NOTE: BID OPENING REMAINS:

2PM, WEDNESDAY, AUGUST 15, 2018

THE PROPOSER IS RESPONSIBLE FOR MAKING THE NECESSARY CHANGES AND MUST ACKNOWLEDGE RECEIPT OF ADDENDUM.

8/8/18
DATE


ROBERT E. MARSHALL
SENIOR PROCUREMENT SPECIALIST
CHATHAM COUNTY

Addendum 2 Questions and Answers

1) What type of handicap tiles would you like to use? Options are: brick, plastic replaceable and cast-in-place permanent

Cast In Place Replaceable

2) Is there a lay-down site available for contractor to use? If so, how large is the site and where is it located?

No

3) Is an as-built final required?

Please see the Special Conditions for As-Built requirements.

4) Is the soil testing handled by the contractor or the owner?

Please see the Special Conditions for testing requirements.

5) Will you supply a CAD file for surveying/layout for construction work and ROW markers?

Yes

6) Where can we find the infiltration trench location? We are unable to locate it on the plans. We need the typical and elevation.

Please see the Infiltration Trench Detail located on sheet 05-007.

<div>BID SHEET</div> <div>Canebrake Road</div>					
8/3/18					
ITEM	DESCRIPTION	UNITS	QUANTITY	PRICE	AMOUNT
ROADWAY					
150-1000	TRAFFIC CONTROL -	LS	1		
210-0100	GRADING COMPLETE -	LS	1		
216-9000	SELECTED MATERIAL FOR SHOULDER CONSTRUCTION, 12 IN MIN, INCLUDING MATER	SY	3607		
310-5080	GR AGGR BASE CRS, 8 INCH, INCL MATL	SY	3457		
318-3000	AGGR SURF CRS	TN	280		
402-1812	RECYCLED ASPH CONC LEVELING, INCL BITUM MATL & H LIME	TN	1138		
402-3130	RECYCLED ASPH CONC 12.5 MM SUPERPAVE, GP 2 ONLY, INCL BITUM MATL & H LI	TN	1548		
413-0750	TACK COAT	GL	531		
432-5010	MILL ASPH CONC PVMT, VARIABLE DEPTH	SY	1021		
441-0016	DRIVEWAY CONCRETE, 6 IN TK	SY	441		
441-0018	DRIVEWAY CONCRETE, 8 IN TK	SY	1118		
441-0104	CONC SIDEWALK, 4 IN	SY	2008		
441-0108	CONC SIDEWALK, 8 IN	SY	288		
441-0304	CONC SPILLWAY, TP 4	EA	1		
441-0748	CONCRETE MEDIAN, 6 IN	SY	111		
441-5002	CONCRETE HEADER CURB, 6 IN, TP 2	LF	409		
441-6012	CONC CURB & GUTTER, 6 IN X 24 IN, TP 2	LF	943		
444-1000	SAWED JOINTS IN EXIST PAVEMENTS - PCC	LF	127		
446-1100	PVMT REINF FABRIC STRIPS, TP 2, 18 INCH WIDTH	LF	3551		
500-3200	CLASS B CONCRETE	CY	4		
500-9999	CLASS B CONC, BASE OR PVMT WIDENING	CY	196		
502-9000	TIMBER RAILING	LF	24		
550-1180	STORM DRAIN PIPE, 18 IN, H 1-10	LF	53		
550-1240	STORM DRAIN PIPE, 24 IN, H 1-10	LF	21		
550-4218	FLARED END SECTION 18 IN, STORM DRAIN	EA	2		
550-4224	FLARED END SECTION 24 IN, STORM DRAIN	EA	2		
610-0200	REM CH LK FENCE, ALL SIZES & TYPES	LF	59		
610-0301	REM GATE -	EA	2		
611-8050	ADJUST MANHOLE TO GRADE	EA	8		
634-1200	RIGHT OF WAY MARKERS	EA	48		
643-1152	CH LK FENCE, ZC COAT, 6 FT, 9 GA	LF	50		
643-8010	GATE, CHAIN LINK ZC COAT -	EA	2		
643-8200	BARRIER FENCE (ORANGE), 4 FT	LF	405		
999-0600	INFILTRATION TRENCH	LF	215		

<div>BID SHEET</div> <div>Canebrake Road</div>					
8/3/18					
ITEM	DESCRIPTION	UNITS	QUANTITY	PRICE	AMOUNT
TEMPORARY EROSION CONTROL					
163-0232	TEMPORARY GRASSING	AC	8		
163-0240	MULCH	TN	86		
163-0300	CONSTRUCTION EXIT	EA	2		
163-0502	CONSTRUCT AND REMOVE SILT CONTROL GATE, TP 2	EA	2		
163-0503	CONSTRUCT AND REMOVE SILT CONTROL GATE, TP 3	EA	2		
163-0528	CONSTRUCT AND REMOVE FABRIC CHECK DAM - TYPE C SILT FENCE	LF	300		
165-0010	MAINTENANCE OF TEMPORARY SILT FENCE, TP A	LF	2053		
165-0030	MAINTENANCE OF TEMPORARY SILT FENCE, TP C	LF	100		
165-0041	MAINTENANCE OF CHECK DAMS - ALL TYPES	LF	300		
165-0086	MAINTENANCE OF SILT CONTROL GATE, TP 2	EA	2		
165-0087	MAINTENANCE OF SILT CONTROL GATE, TP 3	EA	2		
165-0101	MAINTENANCE OF CONSTRUCTION EXIT	EA	2		
167-1000	WATER QUALITY MONITORING AND SAMPLING	EA	1		
167-1500	WATER QUALITY INSPECTIONS	MO	18		
171-0010	TEMPORARY SILT FENCE, TYPE A	LF	4106		
171-0030	TEMPORARY SILT FENCE, TYPE C	LF	200		
PERMANENT EROSION CONTROL					
603-2181	STN DUMPED RIP RAP, TP 3, 18 IN	SY	22		
603-7000	PLASTIC FILTER FABRIC	SY	22		
700-6910	PERMANENT GRASSING	AC	4		
700-7000	AGRICULTURAL LIME	TN	25		
700-8000	FERTILIZER MIXED GRADE	TN	3		
700-8100	FERTILIZER NITROGEN CONTENT	LB	222		
700-9300	SOD	SY	2126		
716-2000	EROSION CONTROL MATS, SLOPES	SY	424		
SIGNING & MARKING					
610-9001	REM SIGN	EA	8		
611-5551	RESET SIGN	EA	8		
636-1033	HIGHWAY SIGNS, TP 1 MATL, REFL SHEETING, TP 9	SF	119		
636-1036	HIGHWAY SIGNS, TP 1 MATL, REFL SHEETING, TP 11	SF	11		
636-2070	GALV STEEL POSTS, TP 7	LF	121		
636-2080	GALV STEEL POSTS, TP 8	LF	98		

<div style="text-align: center;"> BID SHEET Canebrake Road </div>					
8/3/18					
ITEM	DESCRIPTION	UNITS	QUANTITY	PRICE	AMOUNT
636-2090	GALV STEEL POSTS, TP 9	LF	61		
652-6502	SKIP TRAFFIC STRIPE, 5 IN, YELLOW	GLF	3276		
653-1501	THERMOPLASTIC SOLID TRAF STRIPE, 5 IN, WHITE	LF	7275		
653-1502	THERMOPLASTIC SOLID TRAF STRIPE, 5 IN, YELLOW	LF	6156		
653-1704	THERMOPLASTIC SOLID TRAF STRIPE, 24 IN, WHITE	LF	26		
653-1804	THERMOPLASTIC SOLID TRAF STRIPE, 8 IN, WHITE	LF	2739		
653-3501	THERMOPLASTIC SKIP TRAF STRIPE, 5 IN, WHITE	GLF	91		
653-6004	THERMOPLASTIC TRAF STRIPING, WHITE	SY	27		
653-6006	THERMOPLASTIC TRAF STRIPING, YELLOW	SY	148		
654-1001	RAISED PVMT MARKERS TP 1	EA	104		
654-1003	RAISED PVMT MARKERS TP 3	EA	5		
SIGNALIZATION					
647-1000	TRAFFIC SIGNAL INSTALLATION NO - 1	LS	1		
LANDSCAPING					
222-1002	AGGREGATE DRAINAGE COURSE, TP 2 For Root Bridge	TN	139		
457-1005	GEOGRID REINFORCEMENT, TP A For Root Bridge	SY	266		
999-9999	FIELD CONDITION ALLOWANCE	LS	1	\$ 10,000.00	\$ 10,000.00
				TOTAL CONSTRUCTION COST:	
<div style="border-bottom: 1px solid black; margin-bottom: 5px;">NAME / TITLE</div> <div style="border-bottom: 1px solid black; margin-bottom: 5px;">COMPANY</div> <div style="border-bottom: 1px solid black; margin-bottom: 5px;">ADDRESS</div> <div style="border-bottom: 1px solid black; margin-bottom: 5px;">PHONE/FAX</div> <div style="border-bottom: 1px solid black; margin-bottom: 5px;">E-MAIL</div>					

Canebrake Road – Plan Revisions – 7/31/18

- Hargray Communications

Sht 04-001: Added Hargray Communications to list of Utility Owners

- Roadway Graded Aggregate Base Pay Item

Sht 06-001: Revised Roadway Graded Aggregate Base Pay Item to GR AGGR BASE CRS, 8 INCH, INCL MATL (Bid Item 310-5080).

Bid Sheet updated accordingly.

- Driveway Pavement Design

Sht 04-001: Revised Driveway Pavement Design to remove Graded Aggregate Base

Sht 06-001: Updated Driveway Quantities

Shts 13-002, 13-003, 17-001, 17-002, 17-003: Revised driveways DW03, DW07, DW09, DW12 to be reconstructed entirely with concrete pavement

Bid Sheet updated accordingly.

- Select fill in shoulder

Shts 05-001 thru 05-006:

Added the following note:

NOTE 1. CONTACTOR TO ENSURE PLACEMENT OF A MINIMUM DEPTH OF 12-INCHES OF SELECTED MATERIAL WITHIN THE BUFFERS BETWEEN THE ROADWAY AND SIDEWALK OR TRAIL IN ACCORDANCE WITH GDOT STANDARD SPECIFICATION 216-UNPAVED SHOULDERS. PAYMENT FOR THIS WORK SHALL BE PER SQUARE YARD FOR THE UNIT PRICE BID FOR ITEM 216-9000-SELECTED MATERIAL FOR SHOULDER CONSTRUCTION, 12 IN MIN, INCLUDING MATERIAL. SELECTED MATERIAL SHALL BE CLASS IA1 MATERIAL IN ACCORDANCE WITH GDOT STANDARD SPECIFICATION 810, WITH LESS THAN 5% CLAY.

Added the following label with leaders at all sidewalk and trail buffers, including those behind curbs:

SELECTED MATERIAL, 12 IN MIN, SEE NOTE 1

Sht 06-001:

Added quantity table for Selected Material.

Added the following note adjacent to the table:

CONTACTOR TO ENSURE PLACEMENT OF A MINIMUM DEPTH OF 12-INCHES OF SELECTED MATERIAL WITHIN THE BUFFERS BETWEEN THE ROADWAY AND SIDEWALK OR TRAIL IN ACCORDANCE WITH GDOT STANDARD SPECIFICATION

216-UNPAVED SHOULDERS. PAYMENT FOR THIS WORK SHALL BE PER SQUARE YARD FOR THE UNIT PRICE BID FOR ITEM 216-9000-SELECTED MATERIAL FOR SHOULDER CONSTRUCTION, 12 IN MIN, INCLUDING MATERIAL. SELECTED MATERIAL SHALL BE CLASS IA1 MATERIAL IN ACCORDANCE WITH GDOT STANDARD SPECIFICATION 810, WITH LESS THAN 5% CLAY.

Bid Sheet updated accordingly.

- Trail Crossing Sign

Sht 26-008: Added W11-15, W11-15P and W16-9P at 44+40 RT

Sht 06-003: Added location and sign info for addition

Bid Sheet updated accordingly.

- Leveling

Sht 06-001 Added Leveling quantities to Roadway Paving table

Sht 05-001: Added Leveling to Typical Section Nos. 1 and 2

Bid Sheet updated accordingly.

- Infiltration Trenches

Sht 05-007: Modified the Typical Section Infiltration Trench detail

Removed all station ranges, except for:

STA 39+00 RT TO STA 41+15 RT

Revised the select fill note to read:

SELECT FILL, CLASS IA1 MATERIAL PER GDOT SPEC 810, WITH LESS THAN 5% CLAY (TYP)

Sht 13-007: Added begin and end labels for the Infiltration Trench

Sht 06-003: Revised quantities accordingly

Bid Sheet updated accordingly.

1. THE FOLLOWING UTILITY OWNERS MAY HAVE FACILITIES THAT CONFLICT WITH CONSTRUCTION ON THIS PROJECT:

NAME OF UTILITY OWNER	UTILITY	PHONE
AGL RESOURCES	GAS	(912) 239-6508
AT&T	PHONE	(912) 964-7346
GEORGIA POWER COMPANY	ELECTRIC	(912) 944-0641
COMCAST	CABLE	(912) 356-3161
CITY OF SAVANNAH	WATER & SEWER	(912) 651-6573
HARGRAY COMMUNICATIONS	TELECOMMUNICATIONS	(843) 815-1683

THE CONTRACTOR SHALL ADHERE TO THE CALL BEFORE YOU DIG LAW BY CALLING THE UTILITIES PROTECTION CENTER BEFORE BEGINNING CONSTRUCTION. THE CONTRACTOR SHALL BE RESPONSIBLE FOR ALL UNDERGROUND UTILITIES AND SHALL COORDINATE WORK WITH THE UTILITY COMPANIES.



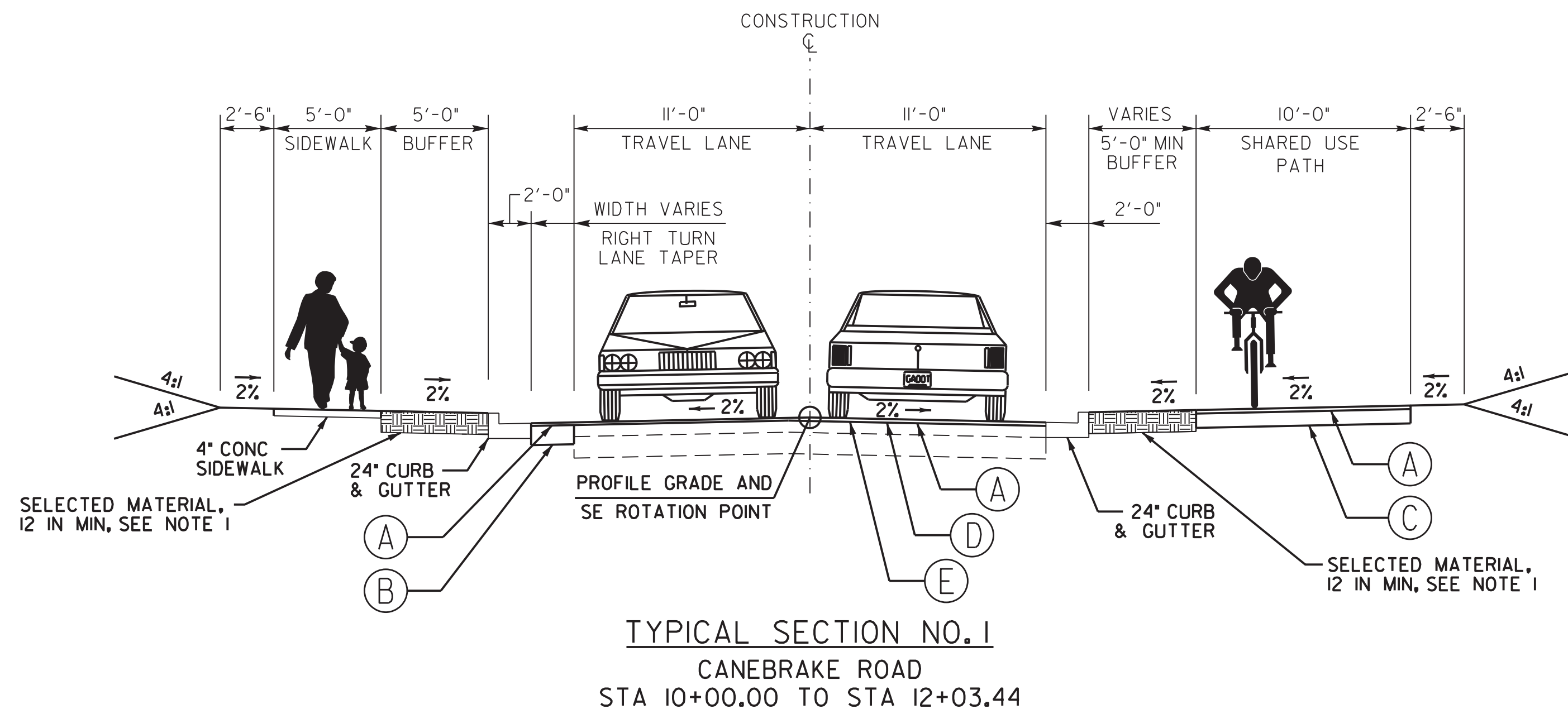
Know what's below.
Call before you dig.

2. DRIVEWAYS SHALL BE REPLACED AS INDICATED ON THE PLANS:

RESIDENTIAL CONCRETE	6" DRIVEWAY CONCRETE
COMMERCIAL CONCRETE	8" DRIVEWAY CONCRETE

3. ALL WORK ON THE PROJECT SHALL CONFORM TO GDOT STANDARDS, SPECIFICATIONS, AND SUPPLEMENTAL SPECIFICATIONS, CURRENT EDITION, EXCEPT AS MODIFIED BY THESE PLANS.
4. ALL MATERIALS SHALL BE OBTAINED FROM GDOT APPROVED SUPPLIERS.
5. ALL TRAFFIC CONTROL SHALL BE ACCORDING TO THE MUTCD, CURRENT EDITION, AND GDOT STANDARDS. A TRAFFIC CONTROL PLAN MUST BE APPROVED BY THE COUNTY ENGINEER PRIOR TO BEGINNING ANY WORK.
6. ADJUSTMENT OF WATER METERS AND METER BOXES SHALL BE INCLUDED IN THE BID PRICE FOR GRADING COMPLETE AND WILL NOT BE MEASURED SEPARATELY FOR PAYMENT.
7. IT WILL BE THE RESPONSIBILITY OF THE CONTRACTOR TO PROTECT ALL POST MOUNTED STREET NAME SIGNS WITHIN THE PROJECT LIMITS. IF A STREET SIGN MUST BE MOVED TO COMPLETE THE WORK, IT SHALL BE RESET AT THE END OF EACH WORK DAY.
8. ALL PIPES SHALL BE CONSTRUCTED USING REINFORCED CONCRETE PIPE. ALL CONCRETE PIPE JOINTS SHALL BE WRAPPED WITH TWO LAYERS OF FILTER FABRIC, 4'0" WIDE CENTERED ON JOINT WITH A 1'0" MINIMUM OVERLAP. THE COST FOR WRAPPING THE PIPE JOINTS SHALL BE INCLUDED IN THE OVERALL COST FOR PIPE ON THE PROJECT. ALL PIPE USED DURING CONSTRUCTION OF THE PROJECT SHALL BE STAMPED BY A GDOT CERTIFIED PIPE TECHNICIAN (CPT).
9. ALL WATER USED FOR CONSTRUCTION SHALL BE METERED THROUGH AN APPROVED BACKFLOW PREVENTION DEVICE AND FIRE HYDRANT METER.
10. CONTRACTOR SHALL SUBMIT SHOP DRAWINGS ALONG WITH STRUCTURAL CALCULATIONS FOR ALL DRAINAGE INLETS TO THE ENGINEER PRIOR TO ORDERING STRUCTURES.
11. ALL TREES SPECIFICALLY LABELED FOR PROTECTION SHALL BE PROTECTED AS PER COUNTY TREE PROTECTION STANDARDS FOR ROAD CONSTRUCTION PROJECTS. ALL WORK ASSOCIATED WITH REMOVAL AND RELOCATION OF TREES AS NOTED ON THE PLANS SHALL BE INCLUDED IN THE BID PRICE FOR GRADING COMPLETE.
12. MAILBOXES SHALL BE RELOCATED AS REQUIRED FOR CONSTRUCTION. THIS WORK WILL BE INCLUDED IN THE BID PRICE FOR GRADING COMPLETE AND WILL NOT BE MEASURED SEPARATELY FOR PAYMENT.
13. THE DISTURBED AREA FOR THIS PROJECT IS 3.53 ACRES, AND AN NOI IS REQUIRED.
14. ANY REFERENCE TO "THE DEPARTMENT" SHALL BE UNDERSTOOD BY THE CONTRACTOR TO MEAN THE CHATHAM COUNTY DEPARTMENT OF ENGINEERING, AND REFERENCES TO THE "DEPARTMENT'S SPECIFICATIONS" SHALL BE UNDERSTOOD BY THE CONTRACTOR TO MEAN THE GEORGIA DEPARTMENT OF TRANSPORTATION'S STANDARD SPECIFICATIONS, CURRENT EDITION.
15. ALL KNOWN UTILITY FACILITIES ARE SHOWN SCHEMATICALLY ON PLANS AND ARE NOT NECESSARILY ACCURATE IN LOCATION AS TO PLAN OR ELEVATION. UTILITY FACILITIES SUCH AS SERVICE LINES OR UNKNOWN FACILITIES NOT SHOWN ON PLANS WILL NOT RELIEVE THE CONTRACTOR OF HIS RESPONSIBILITY.
16. INGRESS AND EGRESS SHALL BE MAINTAINED AT ALL TIMES TO ADJACENT PROPERTIES.
17. PRICE BID FOR TRAFFIC CONTROL - LUMP SUM SHALL INCLUDE, BUT IS NOT LIMITED TO CONSTRUCTION, MAINTENANCE, AND REMOVAL OF TEMPORARY SIGNING AND PAVEMENT MARKINGS, BARRICADES, CHANNELIZING DEVICES ETC. REQUIRED FOR MAINTENANCE OF TRAFFIC DURING CONSTRUCTION.
18. THIS PROJECT SITE IS NOT IN A SPECIAL FLOOD HAZARD AREA.

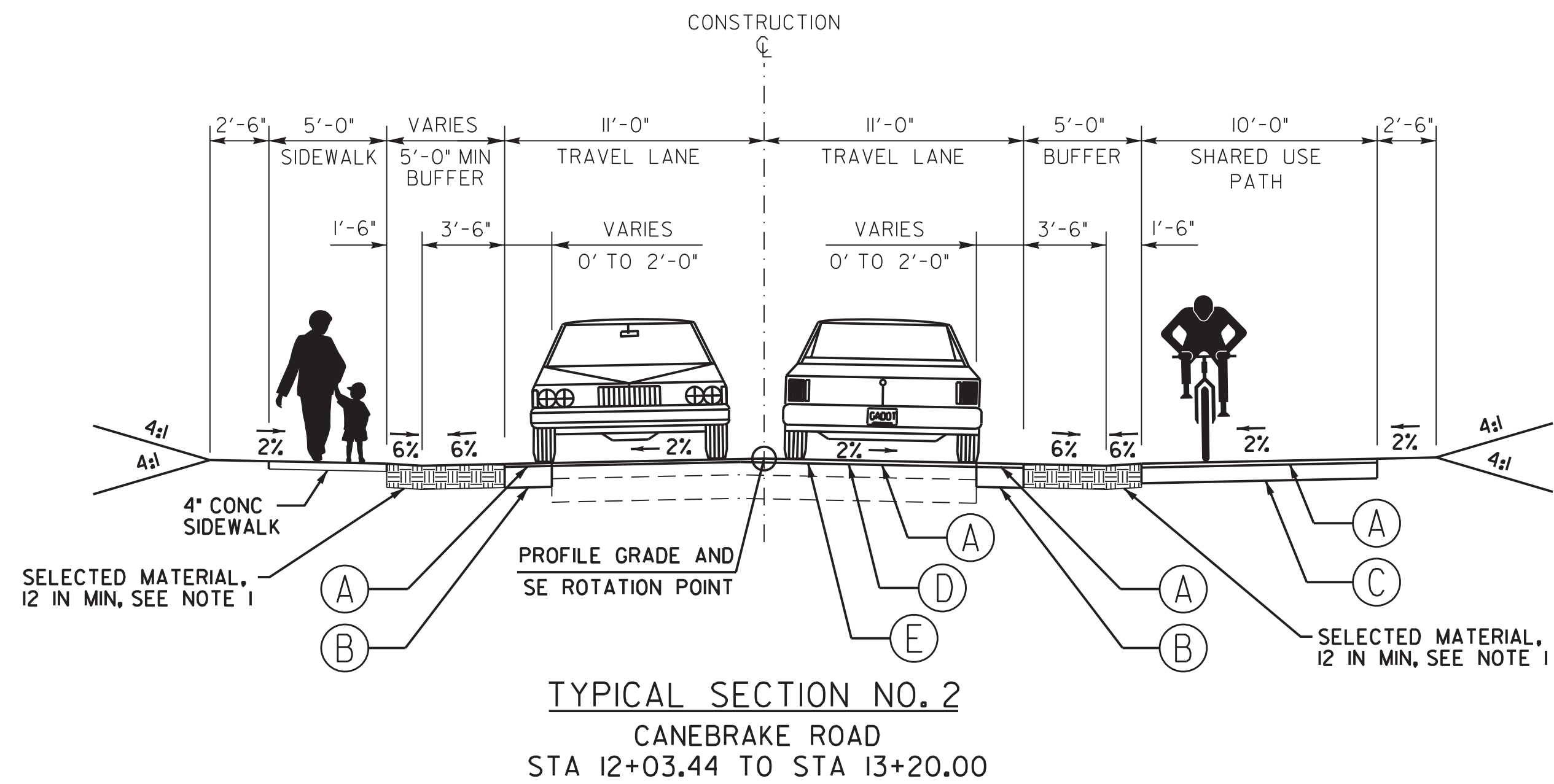
ROADWAY LEGEND

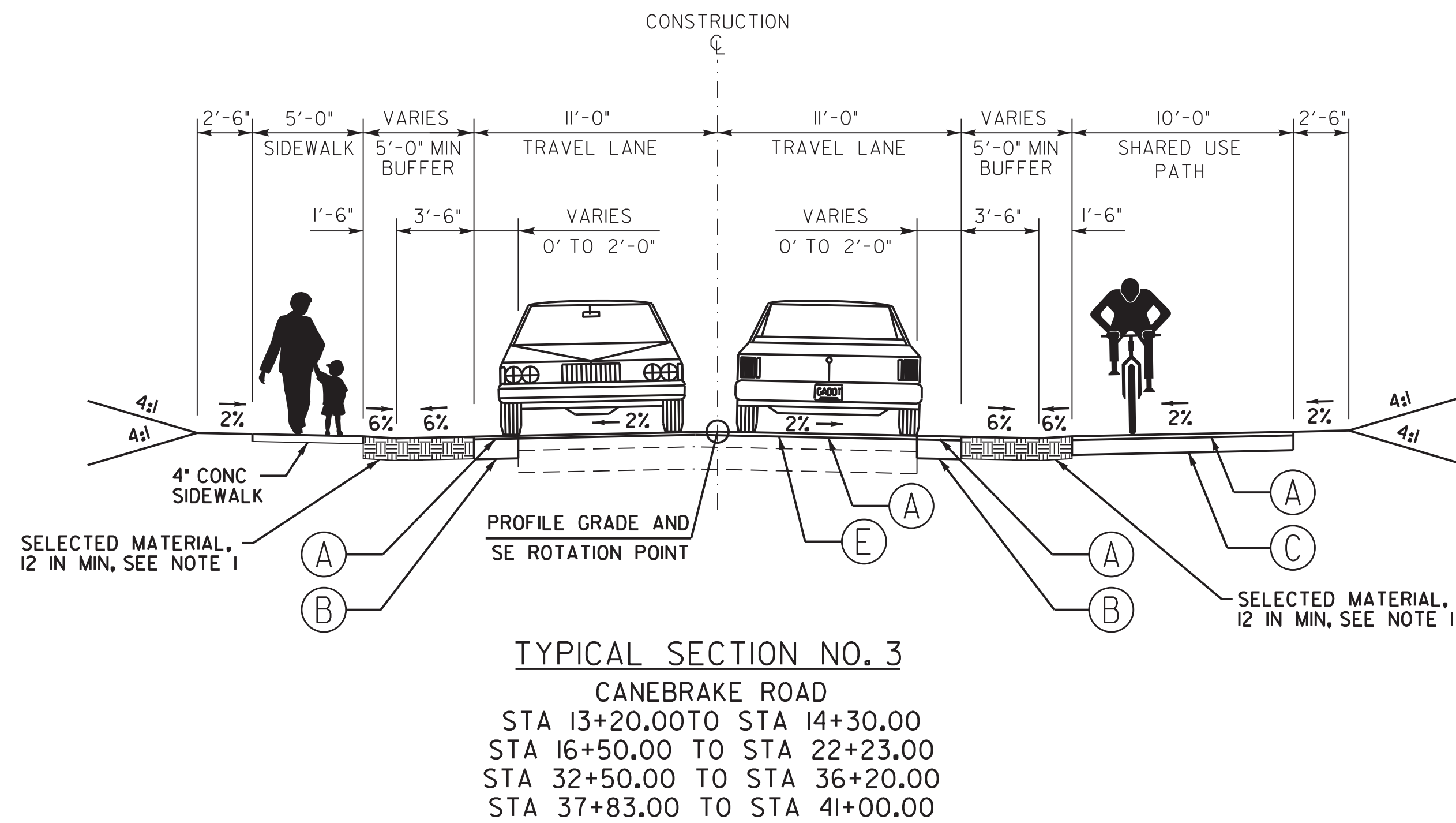


NOTE 1. CONTRACTOR TO ENSURE PLACEMENT OF A MINIMUM DEPTH OF 12 INCHES OF SELECTED MATERIAL WITHIN THE BUFFERS BETWEEN THE ROADWAY AND SIDEWALK OR TRAIL IN ACCORDANCE WITH GDOT STANDARD SPECIFICATION 216-UNPAVED SHOULDERS. PAYMENT FOR THIS WORK SHALL BE PER SQUARE YARD FOR THE UNIT PRICE BID FOR ITEM 216-9000 SELECTED MATERIAL FOR SHOULDER CONSTRUCTION, 12 IN MIN, INCLUDING MATERIAL. SELECTED MATERIAL SHALL BE CLASS 1A1 MATERIAL IN ACCORDANCE WITH GDOT STANDARD SPECIFICATION 810, WITH LESS THAN 5% CLAY.

PAVEMENT DESIGN

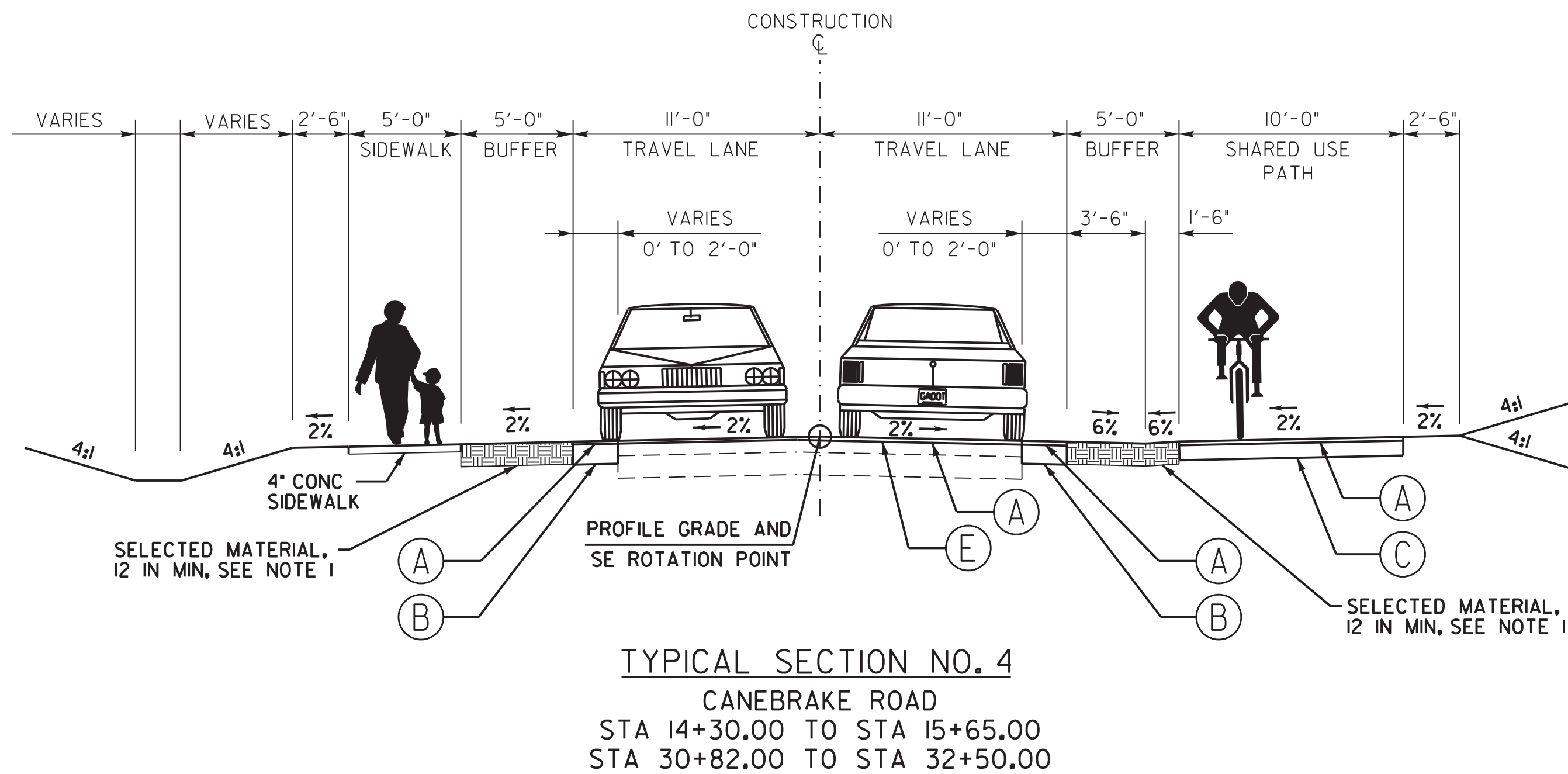
- A 220 LB/SY ASPHALTIC CONCRETE 12.5MM SUPERPAVE
- B 8" CLASS "B" CONCRETE
- C 8" GRADED AGGREGATE BASE
- D VARIABLE DEPTH MILLING
- E LEVELING AS REQUIRED





NOTE 1. CONTRACTOR TO ENSURE PLACEMENT OF A MINIMUM DEPTH OF 12 INCHES OF SELECTED MATERIAL WITHIN THE BUFFERS BETWEEN THE ROADWAY AND SIDEWALK OR TRAIL IN ACCORDANCE WITH GDOT STANDARD SPECIFICATION 216-UNPAVED SHOULDERS. PAYMENT FOR THIS WORK SHALL BE PER SQUARE YARD FOR THE UNIT PRICE BID FOR ITEM 216-9000 SELECTED MATERIAL FOR SHOULDER CONSTRUCTION, 12 IN MIN, INCLUDING MATERIAL. SELECTED MATERIAL SHALL BE CLASS 1A1 MATERIAL IN ACCORDANCE WITH GDOT STANDARD SPECIFICATION 810, WITH LESS THAN 5% CLAY.

- PAVEMENT DESIGN
- (A) 220 LB/SY ASPHALTIC CONCRETE 12.5MM SUPERPAVE
 - (B) 8" CLASS "B" CONCRETE
 - (C) 8" GRADED AGGREGATE BASE
 - (D) VARIABLE DEPTH MILLING
 - (E) LEVELING AS REQUIRED



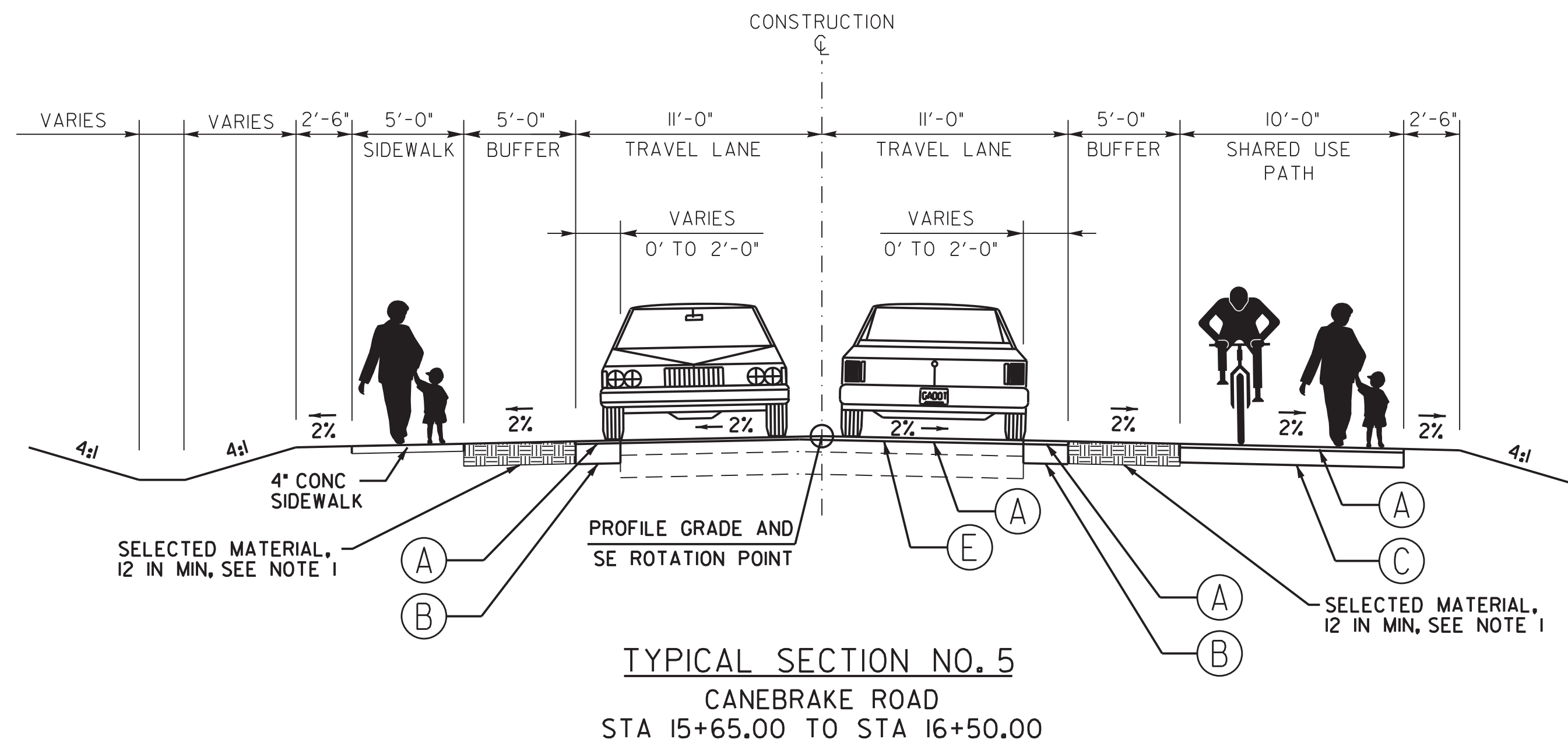
REVISION DATES		
08/03/18		

CHATHAM COUNTY, GEORGIA

TYPICAL SECTIONS

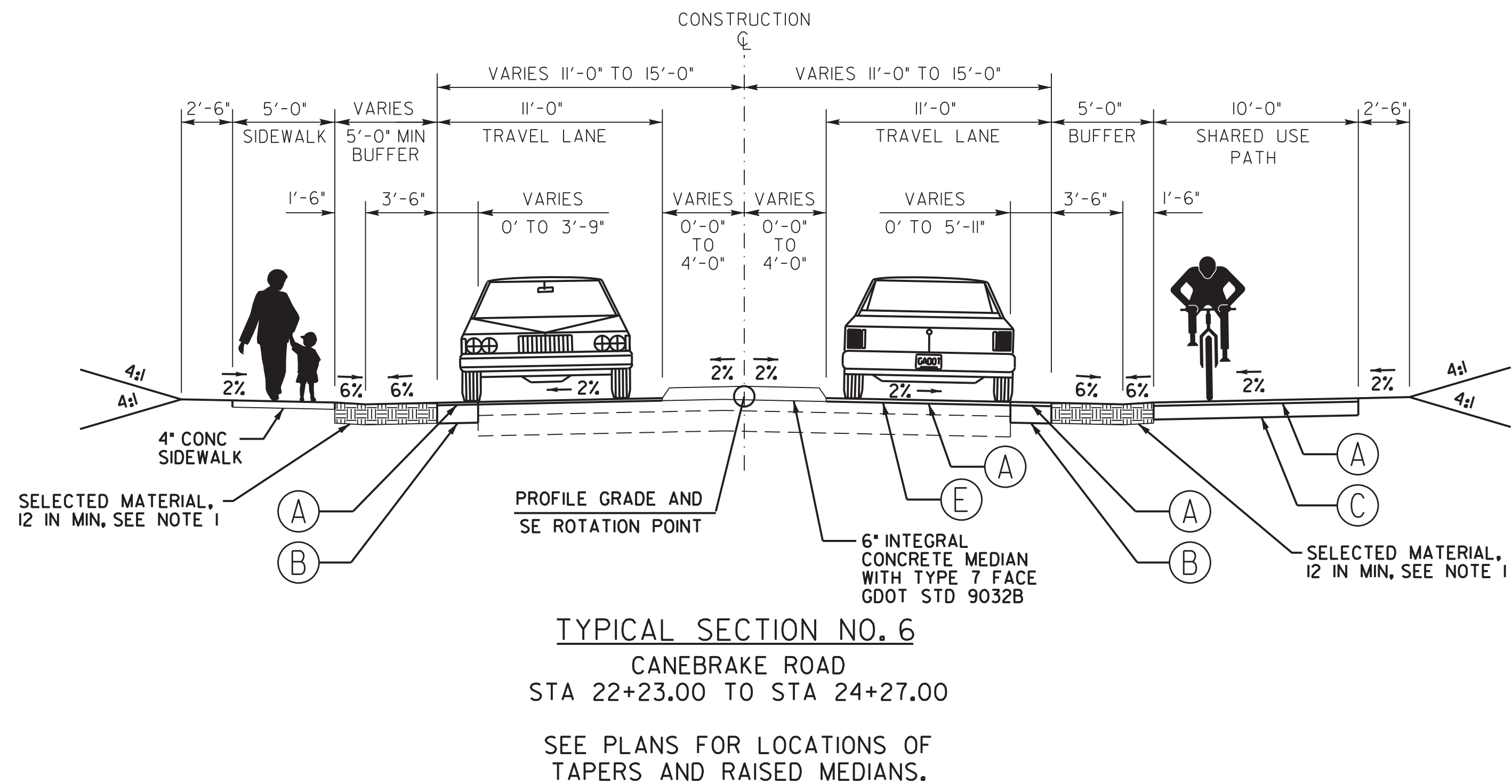
CANEBRAKE ROAD IMPROVEMENT PROJECT

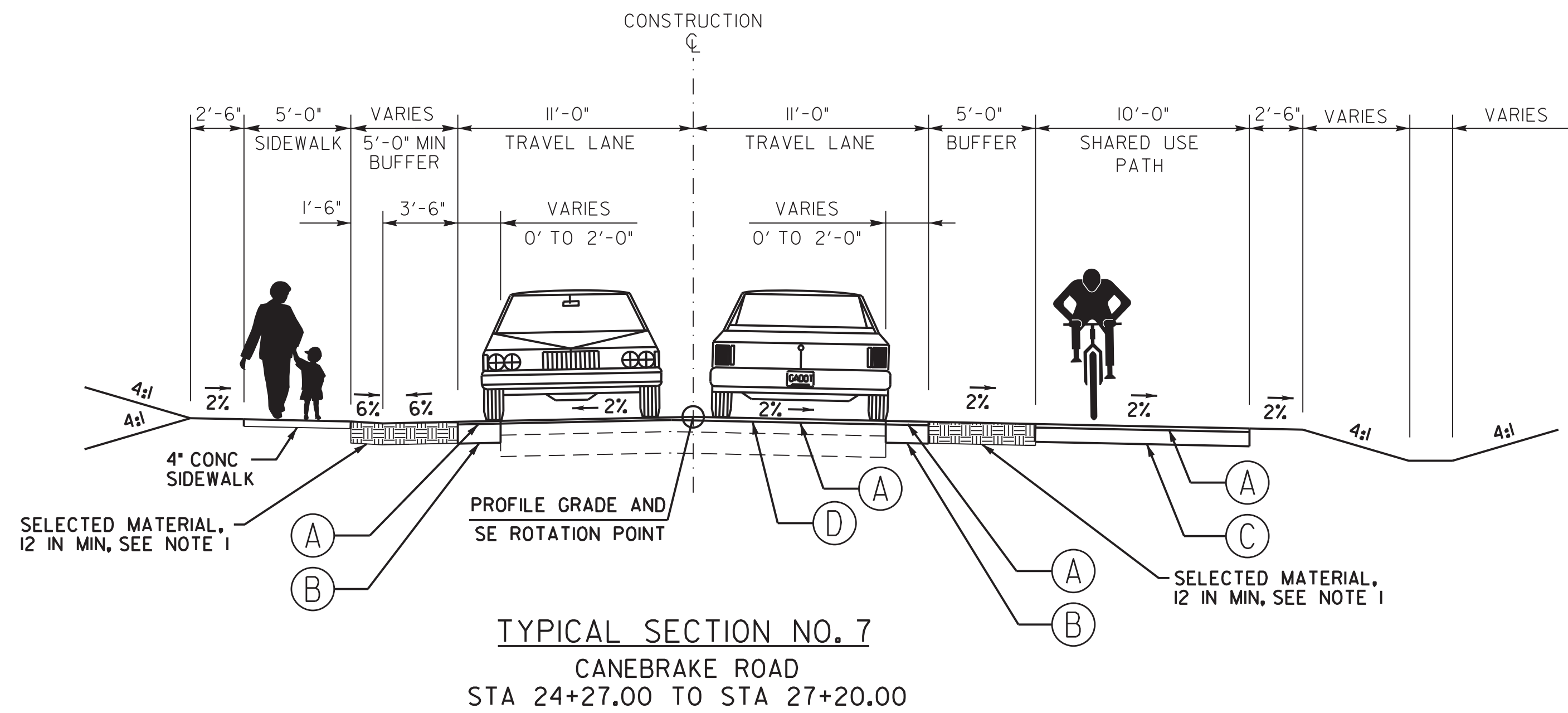
DRAWING No.
05-002



NOTE 1. CONTRACTOR TO ENSURE PLACEMENT OF A MINIMUM DEPTH OF 12 INCHES OF SELECTED MATERIAL WITHIN THE BUFFERS BETWEEN THE ROADWAY AND SIDEWALK OR TRAIL IN ACCORDANCE WITH GDOT STANDARD SPECIFICATION 216-UNPAVED SHOULDERS. PAYMENT FOR THIS WORK SHALL BE PER SQUARE YARD FOR THE UNIT PRICE BID FOR ITEM 216-9000 SELECTED MATERIAL FOR SHOULDER CONSTRUCTION, 12 IN MIN, INCLUDING MATERIAL. SELECTED MATERIAL SHALL BE CLASS 1A1 MATERIAL IN ACCORDANCE WITH GDOT STANDARD SPECIFICATION 810, WITH LESS THAN 5% CLAY.

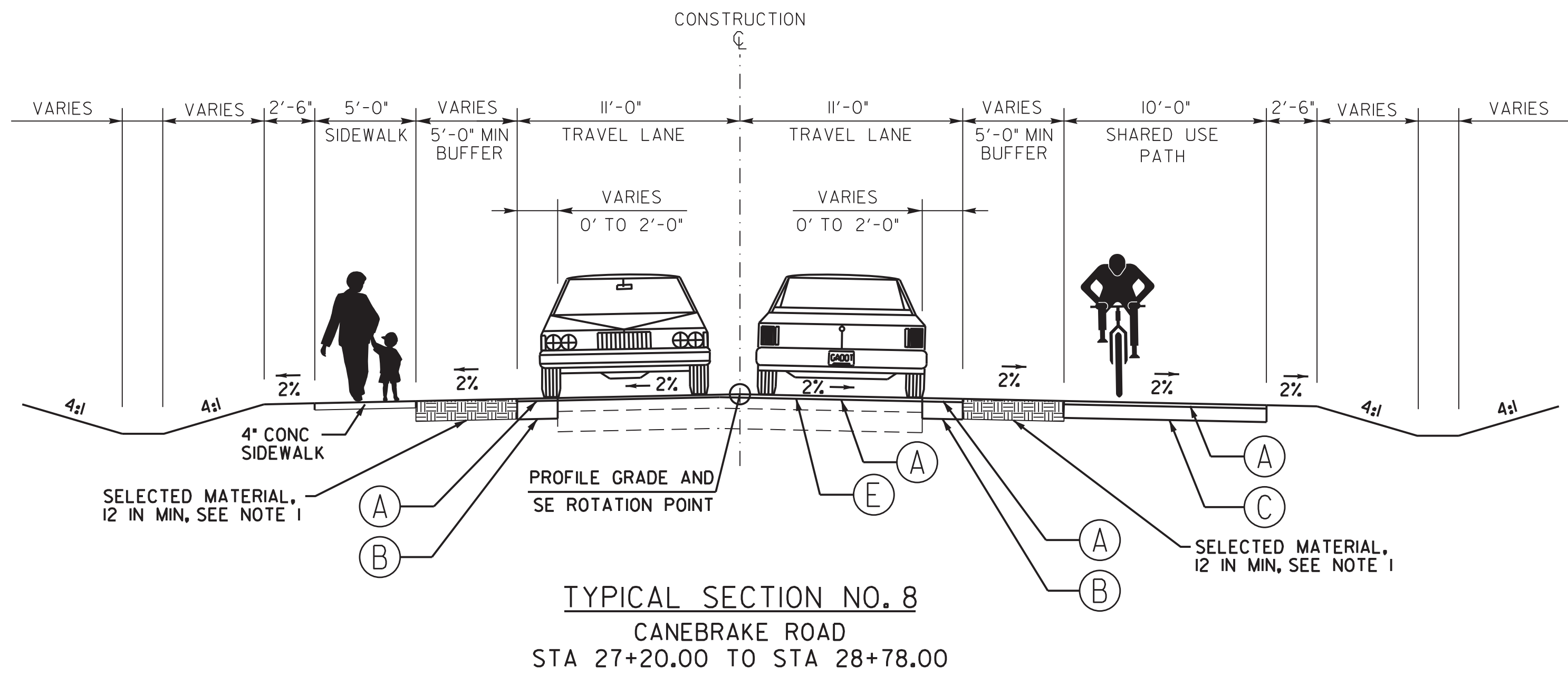
- PAVEMENT DESIGN
- (A) 220 LB/SY ASPHALTIC CONCRETE 12.5MM SUPERPAVE
 - (B) 8" CLASS "B" CONCRETE
 - (C) 8" GRADED AGGREGATE BASE
 - (D) VARIABLE DEPTH MILLING
 - (E) LEVELING AS REQUIRED

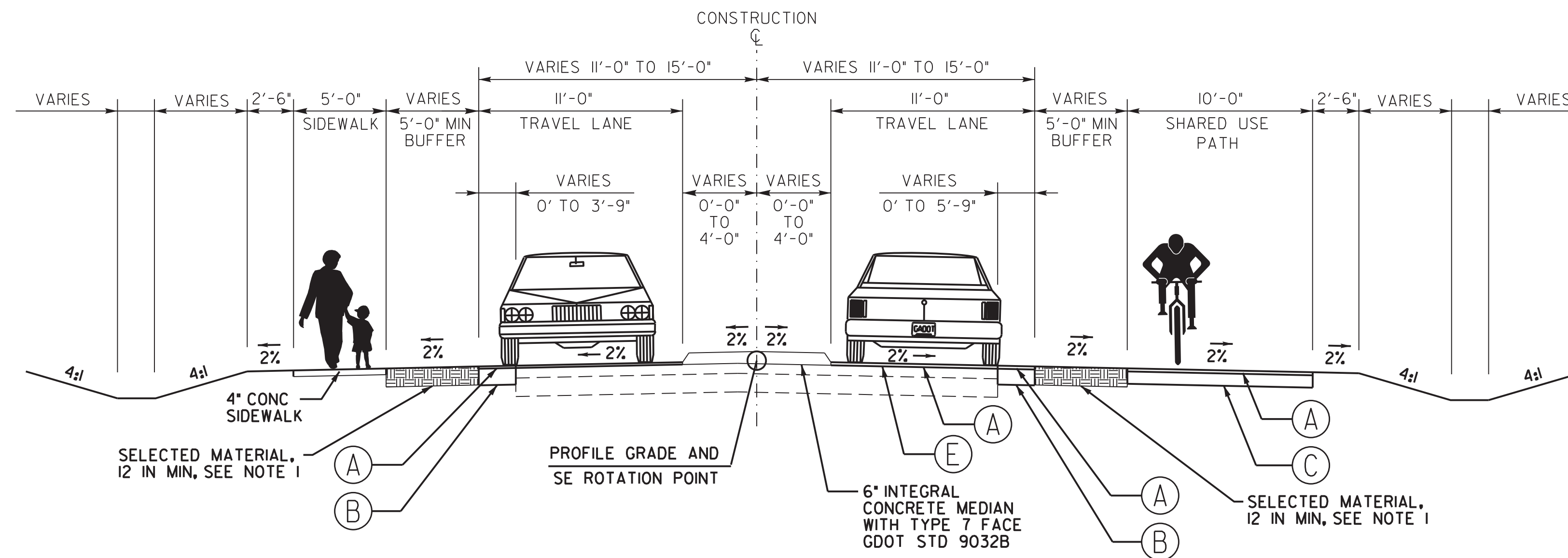




NOTE 1. CONTRACTOR TO ENSURE PLACEMENT OF A MINIMUM DEPTH OF 12 INCHES OF SELECTED MATERIAL WITHIN THE BUFFERS BETWEEN THE ROADWAY AND SIDEWALK OR TRAIL IN ACCORDANCE WITH GDOT STANDARD SPECIFICATION 216-UNPAVED SHOULDERS. PAYMENT FOR THIS WORK SHALL BE PER SQUARE YARD FOR THE UNIT PRICE BID FOR ITEM 216-9000 SELECTED MATERIAL FOR SHOULDER CONSTRUCTION, 12 IN MIN, INCLUDING MATERIAL. SELECTED MATERIAL SHALL BE CLASS 1A1 MATERIAL IN ACCORDANCE WITH GDOT STANDARD SPECIFICATION 810, WITH LESS THAN 5% CLAY.

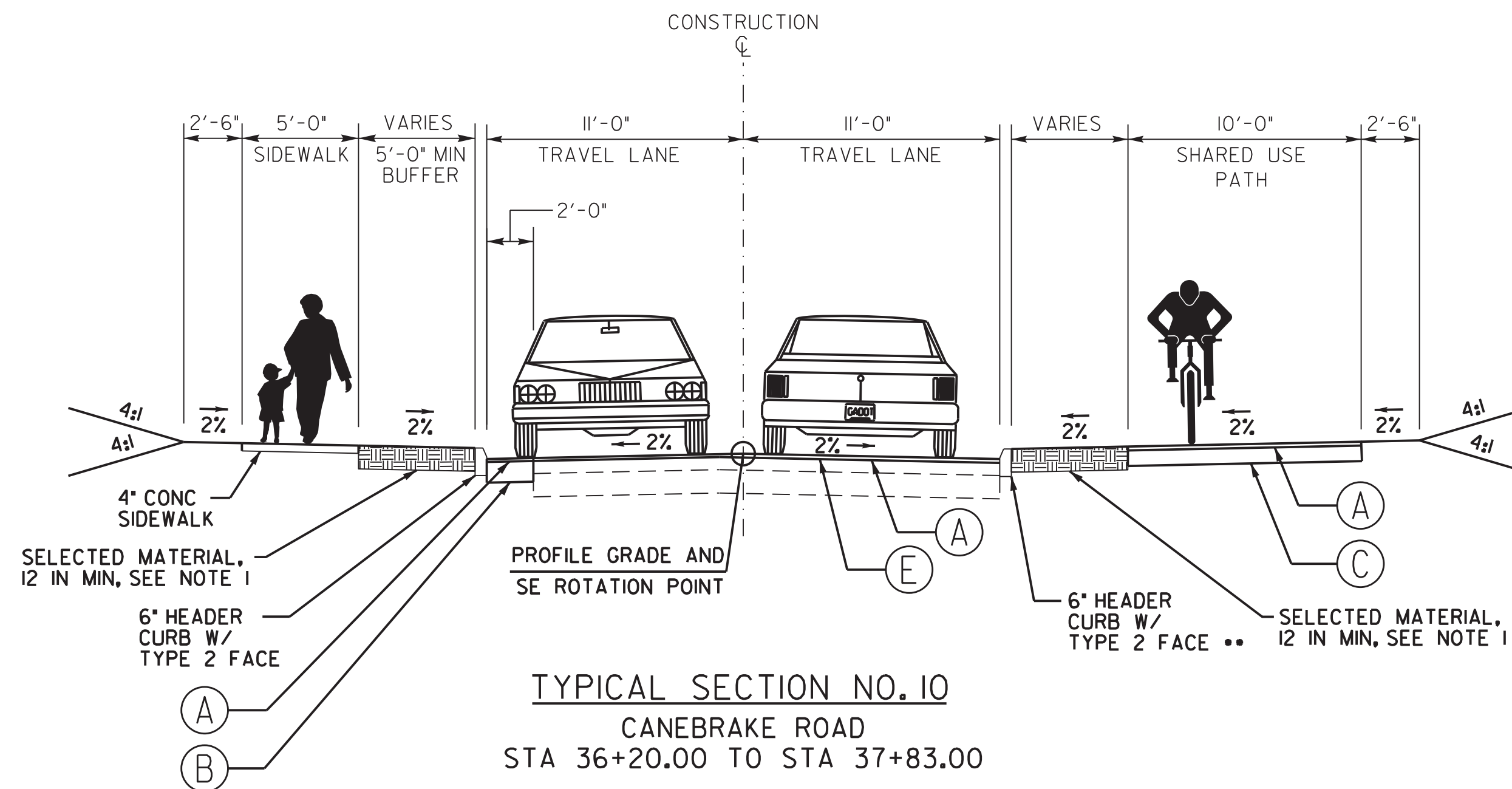
- PAVEMENT DESIGN
- (A) 220 LB/SY ASPHALTIC CONCRETE 12.5MM SUPERPAVE
 - (B) 8" CLASS "B" CONCRETE
 - (C) 8" GRADED AGGREGATE BASE
 - (D) VARIABLE DEPTH MILLING
 - (E) LEVELING AS REQUIRED





TYPICAL SECTION NO. 9
CANEBRAKE ROAD
STA 28+78.00 TO STA 30+82.00

SEE PLANS FOR LOCATIONS OF
TAPERS AND RAISED MEDIANS.



TYPICAL SECTION NO. 10
CANEBRAKE ROAD
STA 36+20.00 TO STA 37+83.00
** NOTE: HEADER CURB ENDS AT 37+20.00 RT

NOTE 1. CONTRACTOR TO ENSURE PLACEMENT OF A MINIMUM DEPTH OF 12 INCHES OF SELECTED MATERIAL WITHIN THE BUFFERS BETWEEN THE ROADWAY AND SIDEWALK OR TRAIL IN ACCORDANCE WITH GDOT STANDARD SPECIFICATION 216-UNPAVED SHOULDERS. PAYMENT FOR THIS WORK SHALL BE PER SQUARE YARD FOR THE UNIT PRICE BID FOR ITEM 216-9000 SELECTED MATERIAL FOR SHOULDER CONSTRUCTION, 12 IN MIN, INCLUDING MATERIAL. SELECTED MATERIAL SHALL BE CLASS 1A1 MATERIAL IN ACCORDANCE WITH GDOT STANDARD SPECIFICATION 810, WITH LESS THAN 5% CLAY.

PAVEMENT DESIGN

- (A) 220 LB/SY ASPHALTIC CONCRETE 12.5MM SUPERPAVE
- (B) 8" CLASS "B" CONCRETE
- (C) 8" GRADED AGGREGATE BASE
- (D) VARIABLE DEPTH MILLING
- (E) LEVELING AS REQUIRED



REVISION DATES

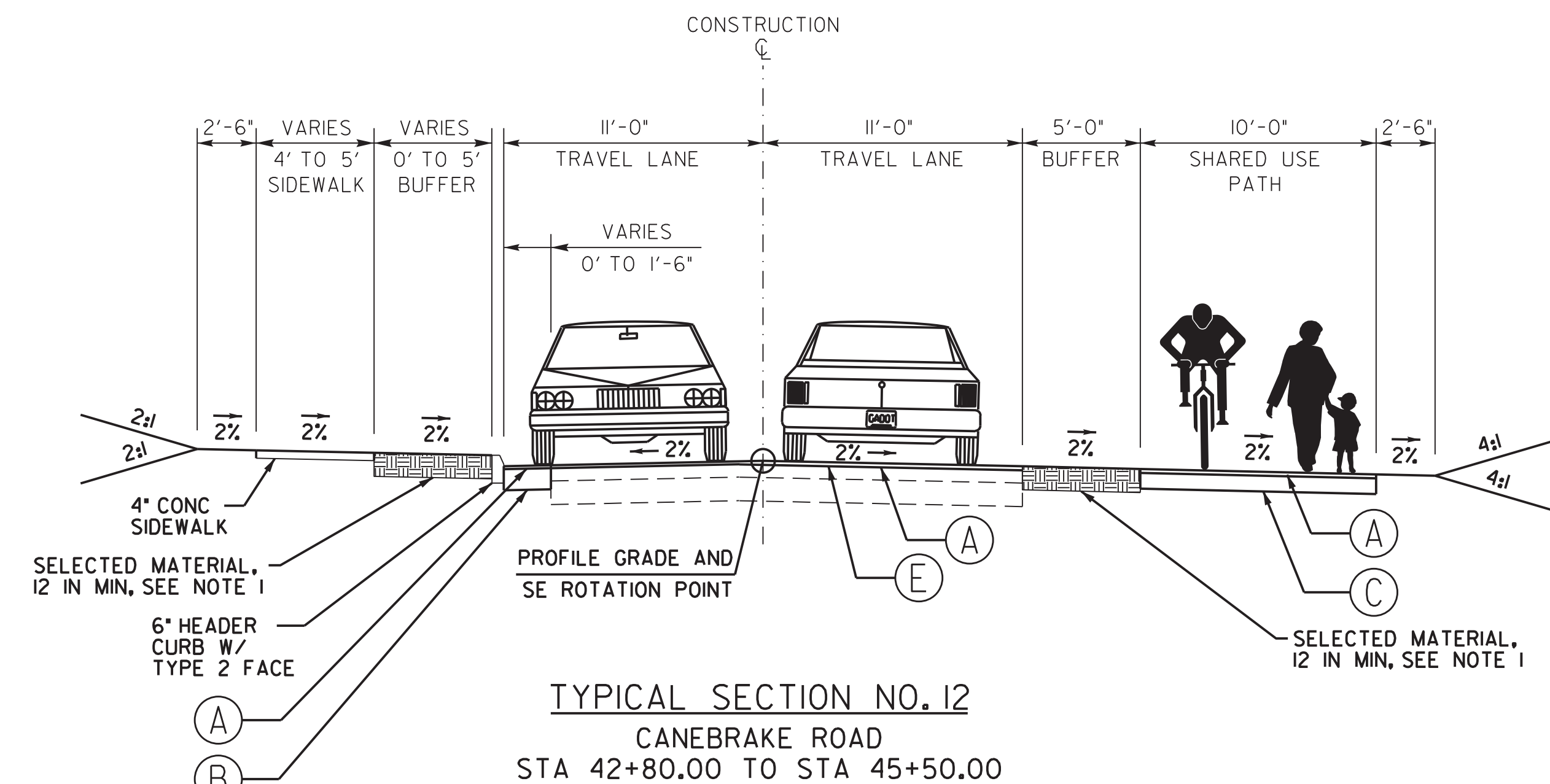
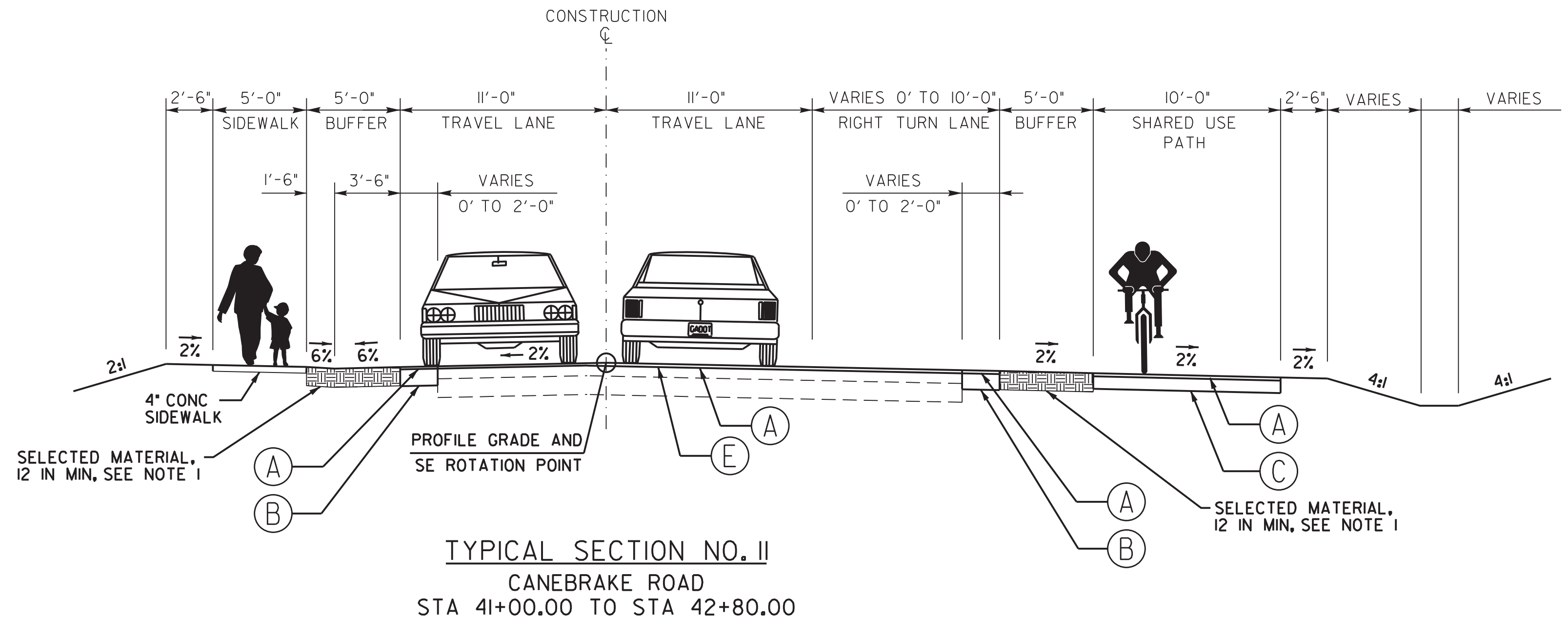
08/03/18		

CHATHAM COUNTY, GEORGIA

TYPICAL SECTIONS

CANEBRAKE ROAD IMPROVEMENT PROJECT

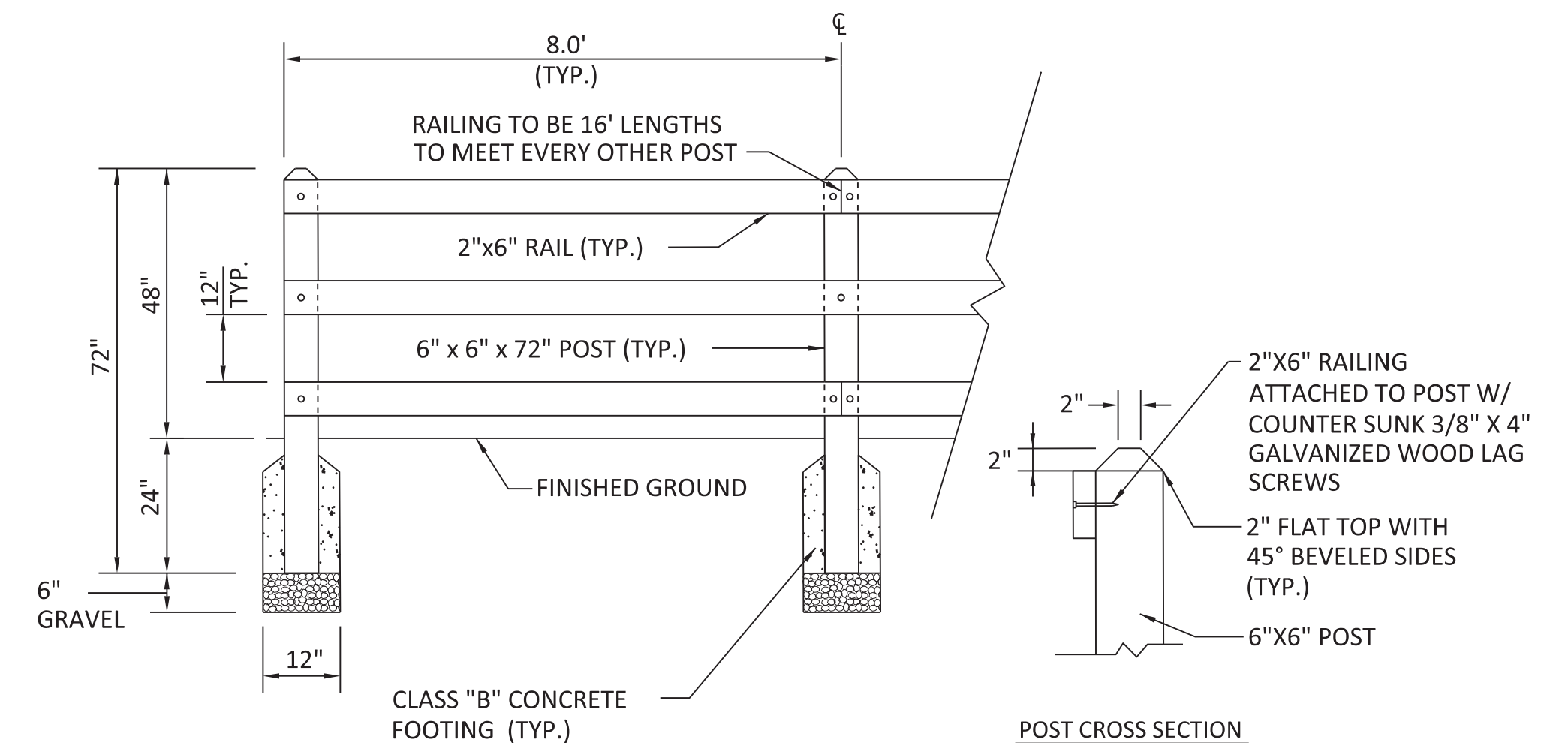
DRAWING No.
05-005



PAVEMENT DESIGN

- A 220 LB/SY ASPHALTIC CONCRETE 12.5MM SUPERPAVE
- B 8" CLASS "B" CONCRETE
- C 8" GRADED AGGREGATE BASE
- D VARIABLE DEPTH MILLING
- E LEVELING AS REQUIRED

NOTE 1. CONTRACTOR TO ENSURE PLACEMENT OF A MINIMUM DEPTH OF 12 INCHES OF SELECTED MATERIAL WITHIN THE BUFFERS BETWEEN THE ROADWAY AND SIDEWALK OR TRAIL IN ACCORDANCE WITH GDOT STANDARD SPECIFICATION 216-UNPAVED SHOULDERS. PAYMENT FOR THIS WORK SHALL BE PER SQUARE YARD FOR THE UNIT PRICE BID FOR ITEM 216-9000 SELECTED MATERIAL FOR SHOULDER CONSTRUCTION, 12 IN MIN, INCLUDING MATERIAL. SELECTED MATERIAL SHALL BE CLASS 1A1 MATERIAL IN ACCORDANCE WITH GDOT STANDARD SPECIFICATION 810, WITH LESS THAN 5% CLAY.



- NOTES:
- FENCE TO BE CONSTRUCTED WITH PRESSURE TREATED WOOD.
 - RAILING TO MEET FLUSH WITH OUTSIDE EDGE OF END POSTS.
 - REFER TO CONSTRUCTION PLANS FOR FENCE LOCATIONS.
 - RAIL SIDE TO FACE TRAIL.
 - THE PRICE BID FOR 502-9000 - TIMBER RAILING, SHALL INCLUDE ALL COSTS ASSOCIATED WITH THE CONSTRUCTION OF THE WOODEN SAFETY RAIL PER THE DETAIL, INCLUDING, BUT NOT LIMITED TO: CLASS B CONCRETE FOOTING, GRAVEL, POSTS, RAILS AND FASTENERS.

WOODEN SAFETY RAIL
NOT TO SCALE

CLASS "B" CONCRETE BASE OR PAVEMENT WIDENING DETAIL

NO SCALE
CLASS "B" CONCRETE BASE OR PAVEMENT WIDENING
Item Code 500-9999 - Cu.Yds.

IN EXCAVATED AREAS BETWEEN THE EXISTING PAVING AND NEW CURB & GUTTER THAT ARE 6'-0" OR LESS IN WIDTH, AND ALSO IN PROPOSED WIDENING AREAS THAT ARE 6'-0" OR LESS IN WIDTH, CLASS "B" CONCRETE SHALL BE PLACED. PAYMENT WILL BE MADE UNDER "CLASS B CONCRETE BASE OR PAVEMENT WIDENING".

IN EXCAVATED AREAS GREATER THAN 6'-0" IN WIDTH, THE CONTRACTOR SHALL PLACE BASE AND PAVING AS SPECIFIED ON THE TYPICAL SECTION.

SEE PLANS FOR DETAILS OF CURB AND GUTTER CONSTRUCTION.

PAVEMENT REINFORCING FABRIC DETAIL

TYPICAL SECTION DETAIL TO BE USED WHEN EXISTING PAVEMENT IS TO BE RESURFACED WITH TWO INCHES OR MORE OF ASPHALTIC CONCRETE

TYPICAL SECTION DETAIL TO BE USED WHEN EXISTING PAVEMENT IS TO BE RESURFACED WITH LESS THAN TWO INCHES OF ASPHALTIC CONCRETE

MILL EXISTING LANE ONE FOOT WIDE TO DEPTH OF ADJOINING LAYER TO BE PLACED. COST OF MILLING FOR THIS WORK TO BE INCLUDED IN THE UNIT PRICE BID FOR PAVEMENT REINFORCING FABRIC.

TREE PROTECTION

NO EXCAVATION, TRENCHING, TILLING, GRUBBING, VEHICLE, OR EQUIPMENT STORAGE WITHIN LIMITS OF TREE PROTECTION FENCING.

4' TEMPORARY ORANGE BARRIER FENCE.

4' TEMPORARY ORANGE BARRIER FENCE TREE PROTECTION BARRIER (TYP).

BARRIER CONSTRUCTED TO PROTECT TREE TRUNK, CROWN, AND ROOT SYSTEM FROM INJURY. BARRIERS SHALL BE LOCATED AS DIRECTED BY THE PROJECT ENGINEER. BARRIER SHALL BE KEPT IN GOOD CONDITION FOR THE DURATION OF THE PROJECT AND IS TO REMAIN IN PLACE UNTIL REMOVAL IS APPROVED BY THE PROJECT ENGINEER.

FOR ADDED PROTECTION

- PROVIDE 4" DEEP WOOD CHIP MULCH OVER ANY UNPROTECTED ROOT ZONE.
- MAKE CLEAN CUTS ON ROOTS EXPOSED BY GRADING AND BACKFILL IMMEDIATELY.
- PROVIDE TEMPORARY IRRIGATION WHERE PRACTICAL AND FEASIBLE.

ROOT BRIDGING DETAIL

NOTE: CONTRACTOR TO VERIFY LOCATION OF ROOT BRIDGING WITH CHATHAM COUNTY ENGINEER PRIOR TO BEGINNING CONSTRUCTION. NO HEAVY CONSTRUCTION EQUIPMENT SHALL GO OVER ROOT BRIDGING AREA.

STANDARD ORANGE TREE PROTECTION FENCE, SEE PLANS.

TRANSITION TO EXISTING GRADE.

FILL MATERIAL (TYP.), THICKNESS VARIES ACCORDING TO EXISTING GRADES. CLEAR ZONE (2' TYP. SHOULDER).

CONCRETE PATH OR SIDEWALK

#57 STONE BASE, THICKNESS VARIES; 6" MIN. - 12" MAX.

UNCOMPACTED SUBGRADE; EXISTING GRADE TO REMAIN UNDISTURBED

2' TYP. 4% MAX.

DEPTH VARIES

GEOGRID FABRIC

EXISTING TREE ROOTS

SEE DRAWINGS 29-003, 29-006 & 29-007 FOR PLAN VIEW

LIMITS OF ROOT BRIDGING SHALL BE DETERMINED BY CHATHAM COUNTY

TYPICAL SECTION INFILTRATION TRENCH

12'-0" TRAVEL LANE

5'-0" BUFFER

SIDEWALK OR PATH

PLACE SOD IN STATION RANGES AS LISTED BELOW

1'-6" 0'-6"

6" 6" 2%

NOTE: FILL OVER TRENCH SHALL BE 6" MINIMUM DEPTH.

SELECT FILL, CLASS IAI MATERIAL PER GDOT SPEC 810, WITH LESS THAN 5% CLAY (TYP)

IMPERVIOUS MEMBRANE 10 MIL THICKNESS

3/4" TO 2" CLEAN CRUSHED ANGULAR STONE 36" DEEP (MIN.)

FILTER FABRIC (3 SIDES) FILTER FABRIC SHALL CONFORM TO GDOT SPECIFICATION SECTION 881

CANEBRAKE ROAD
STA 39+00 RT TO STA 41+15 RT

24" CONCRETE CURB & GUTTER DETAIL

6" 6" 1" / FT. SLOPE (TYP) 24"

CURB & GUTTER SHALL BE CONSTRUCTED IN ACCORDANCE WITH GDOT STD 9032B WITH THE EXCEPTION OF THE OVERALL WIDTH

** AT CONTRACTOR'S OPTION, THE GUTTER THICKNESS MAY BE INCREASED AT EDGE OF PAVEMENT TO MAKE BOTTOM OF GUTTER PARALLEL WITH PAVING OF BASE COURSE, BUT THE GUTTER THICKNESS MUST NOT BE LESS THAN THE SPECIFIED 6" AT ANY POINT

*** SLOPE OF GUTTER SHALL MATCH SUPER WHEN USED ON HIGH SIDE OF SUPER

SUMMARY OF QUANTITIES

ROADWAY PAVING								
LOCATION	RECYCLED ASPH CONC 12.5 MM SUPERPAVE, GP 2 ONLY, INCL BITUM MATL & H LIME TN	GR AGGR BASE CRS, 8 INCH, INCL MATL SY	TACK COAT GL	RECYCLED ASPH CONC LEVELING, INCL BITUM MATL & H LIME TN	MILL ASPH CONC PVMT, VARIABLE DEPTH SY	SAWED JOINTS IN EXIST PAVEMENTS PCC LF	PVMT REINF FABRIC STRIPS, TP 2, 18 INCH WIDTH LF	CLASS B CONC, BASE OR PVMT WIDENING CY
CANEBRAKE ROAD								
BEGIN TO STA 11+00.00	88	287	26	3	413			11
STA 11+00.00 TO STA 16+50.00	217	459	76	68	511		309	28
STA 16+50.00 TO STA 21+50.00	190	428	65	264			335	17
STA 21+50.00 TO STA 26+50.00	226	529	76	172			500	42
STA 26+50.00 TO STA 31+50.00	227	542	76	229			500	41
STA 31+50.00 TO STA 36+50.00	195	454	66	89			596	21
STA 36+50.00 TO STA 41+50.00	190	386	67	156		127	746	24
STA 41+50.00 TO END	215	372	79	157	97		565	12
PROJECT TOTAL	1548	3457	531	1138	1021	127	3551	196

SPECIALTY EARTHWORK	
LOCATION	SELECTED MATERIAL FOR SHOULDER CONSTRUCTION, 12 IN MIN, INCLUDING MATERIAL SY
CANEBRAKE ROAD	
BEGIN TO STA 11+00.00	109
STA 11+00.00 TO STA 16+50.00	443
STA 16+50.00 TO STA 21+50.00	529
STA 21+50.00 TO STA 26+50.00	518
STA 26+50.00 TO STA 31+50.00	561
STA 31+50.00 TO STA 36+50.00	466
STA 36+50.00 TO STA 41+50.00	554
STA 41+50.00 TO END	427
PROJECT TOTAL	3607

CONTACTOR TO ENSURE PLACEMENT OF A MINIMUM DEPTH OF 12-INCHES OF SELECTED MATERIAL WITHIN THE BUFFERS BETWEEN THE ROADWAY AND SIDEWALK OR TRAIL IN ACCORDANCE WITH GDOT STANDARD SPECIFICATION 216-UNPAVED SHOULDERS. PAYMENT FOR THIS WORK SHALL BE PER SQUARE YARD FOR THE UNIT PRICE BID FOR ITEM 216-9000-SELECTED MATERIAL FOR SHOULDER CONSTRUCTION, 12 IN MIN, INCLUDING MATERIAL. SELECTED MATERIAL SHALL BE CLASS 1A1 MATERIAL IN ACCORDANCE WITH GDOT STANDARD SPECIFICATION 810, WITH LESS THAN 5% CLAY.

CURB & GUTTER, MEDIAN AND SIDEWALK					
LOCATION	CONC SIDEWALK, 4 IN SY	CONC SIDEWALK, 8 IN SY	CONCRETE MEDIAN, 6 IN SY	CONCRETE HEADER CURB, 6 IN, TP 2 LF	CONC CURB & GUTTER, 6 IN X 24 IN, TP 2 LF
CANEBRAKE ROAD					
BEGIN TO STA 11+00.00	22	69	41		368
STA 11+00.00 TO STA 16+50.00	220	83		25	311
STA 16+50.00 TO STA 21+50.00	287	51			39
STA 21+50.00 TO STA 26+50.00	258				
STA 26+50.00 TO STA 31+50.00	260		35		
STA 31+50.00 TO STA 36+50.00	301		35	75	
STA 36+50.00 TO STA 41+50.00	378	22		204	
STA 41+50.00 TO END	282	63		105	225
PROJECT TOTAL	2008	288	111	409	943

DRIVEWAYS			
LOCATION	DRIVEWAY CONCRETE, 6 IN TK SY	DRIVEWAY CONCRETE, 8 IN TK SY	AGGR SURF CRS TN
DW01 STA 11+08.72 LT		66	10
DW02 STA 11+77.10 LT		55	10
DW03 STA 12+29.37 RT		78	10
DW04 STA 12+97.00 LT		113	10
DW05 STA 14+01.25 RT		81	10
DW06 STA 14+34.30 RT		79	10
DW07 STA 16+64.00 LT	34		10
DW08 STA 17+43.00 LT	34		10
DW09 STA 17+88.00 RT		104	10
DW10 STA 18+70.00 LT	54		10
DW11 STA 19+88.00 LT	42		10
DW12 STA 20+88.00 RT		106	10
DW12A STA 22+50.00 RT		32	10
DW12B STA 24+20.00 RT		34	10
DW13 STA 25+23.00 LT	41		10
DW14 STA 25+84.00 LT		46	10
DW15 STA 26+75.00 LT		46	10
DW16 STA 27+50.00 LT	48		10
DW17 STA 32+27.00 RT	39		10
DW17A STA 31+13.00 RT	38		10
DW18 STA 32+46.00 LT		54	10
DW19 STA 34+18.00 RT	39		10
DW20 STA 34+68.00 LT	33		10
DW21 STA 35+41.95 LT		54	10
DW22 STA 35+93.00 RT	39		10
DW23 STA 38+00.00 LT		54	10
DW24 STA 38+49.00 RT		87	10
DW25 STA 38+83.50 LT		29	10
PROJECT TOTAL	441	1118	280

FENCING					
LOCATION	TIMBER RAILING LF	REM CH LK FENCE, ALL SIZES & TYPES LF	REM GATE - EA	CH LK FENCE, ZC COAT, 6 FT, 9 GA LF	GATE, CHAIN LINK ZC COAT EA
GATEWAY BOULEVARD					
100+64.67, 55.17' RT TO 100+43.29, 53.01' RT	24				
CANEBRAKE ROAD					
38+54.10, 23.77' LT TO 38+73.17, 15.03' LT		30			
38+93.39, 15.56' LT TO 39+12.84, 24.83' LT		29			
38+73.17, 15.03' LT TO 38+93.39, 15.56' LT			2		
38+56.17, 33.00' LT TO 38+75.56, 33.00' LT				20	
38+91.44, 33.00' LT TO 39+12.84, 24.83' LT				30	
38+73.87, 24.07' LT TO 38+93.74, 24.46' LT					2
PROJECT TOTAL	24	59	2	50	2

The seal of Chatham County, Georgia, is a circular emblem. It features a central illustration of a classical building with four columns and a pediment, topped with a dome. The building is flanked by two stars. Below the building is the year "1777". The words "CHATHAM COUNTY" are arched across the top, and "GEORGIA" is arched across the bottom, separated by two stars. A decorative border surrounds the central elements.

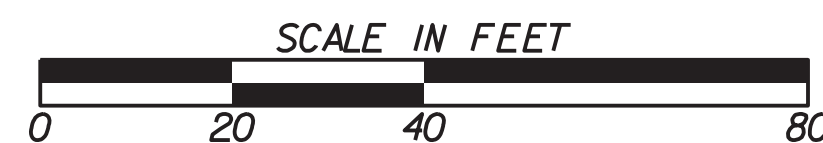
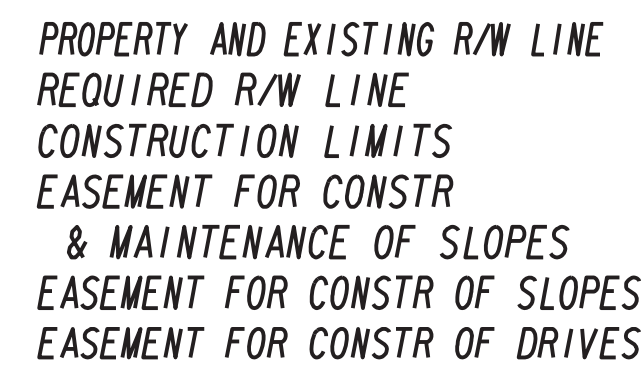
CHATHAM COUNTY, GEORGIA

CANE BRAKE ROAD IMPROVEMENT PROJECT

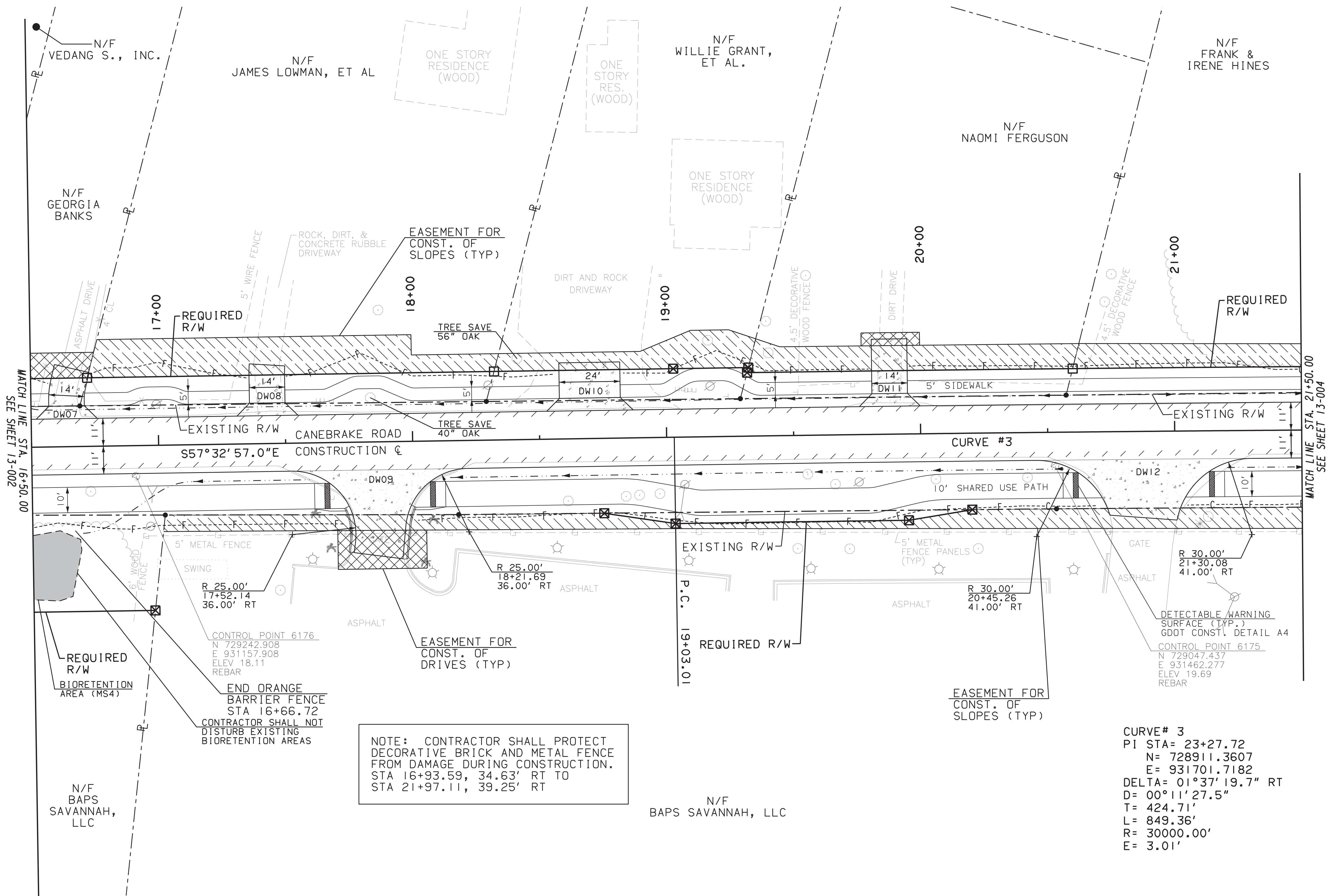
06-003

SIGNALS		
LOCATION	INSTL NO	LS
GATEWAY BLVD AT SR 204	1	1
PROJECT TOTAL		1

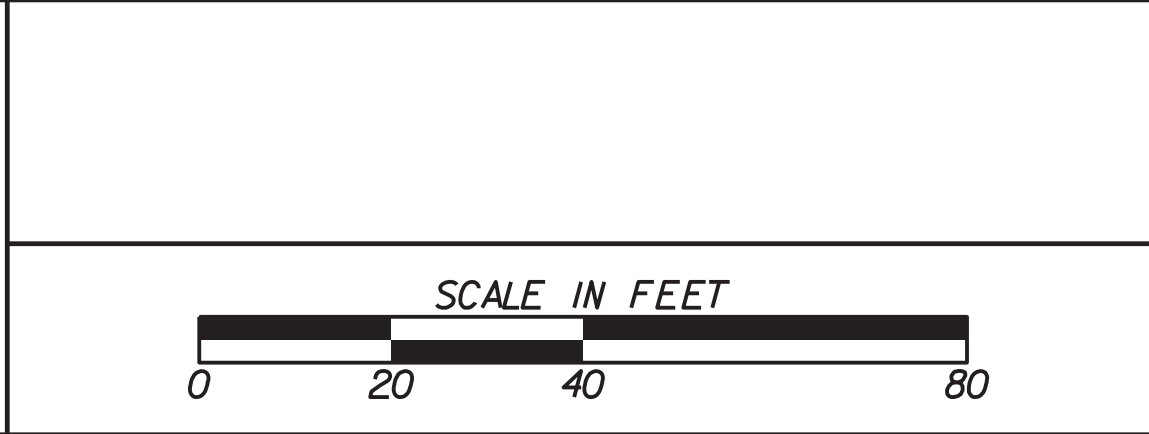
POST-CONSTRUCTION STORMWATER MANAGEMENT	
LOCATION	INFILTRATION TRENCH
	LF
STA 39+00 RT TO STA 41+15 RT	215
PROJECT TOTAL	215



DRAWING No.
13-002

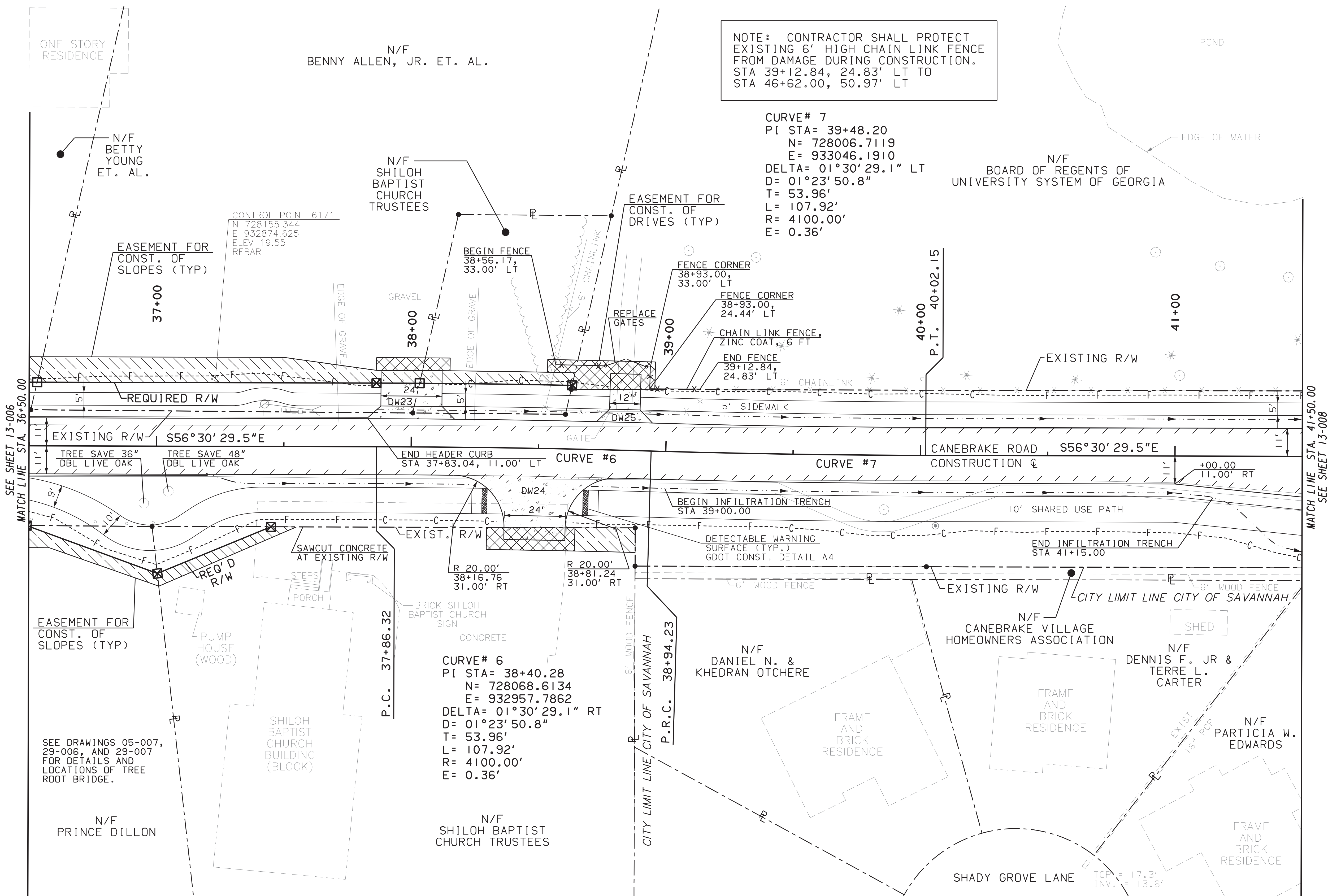


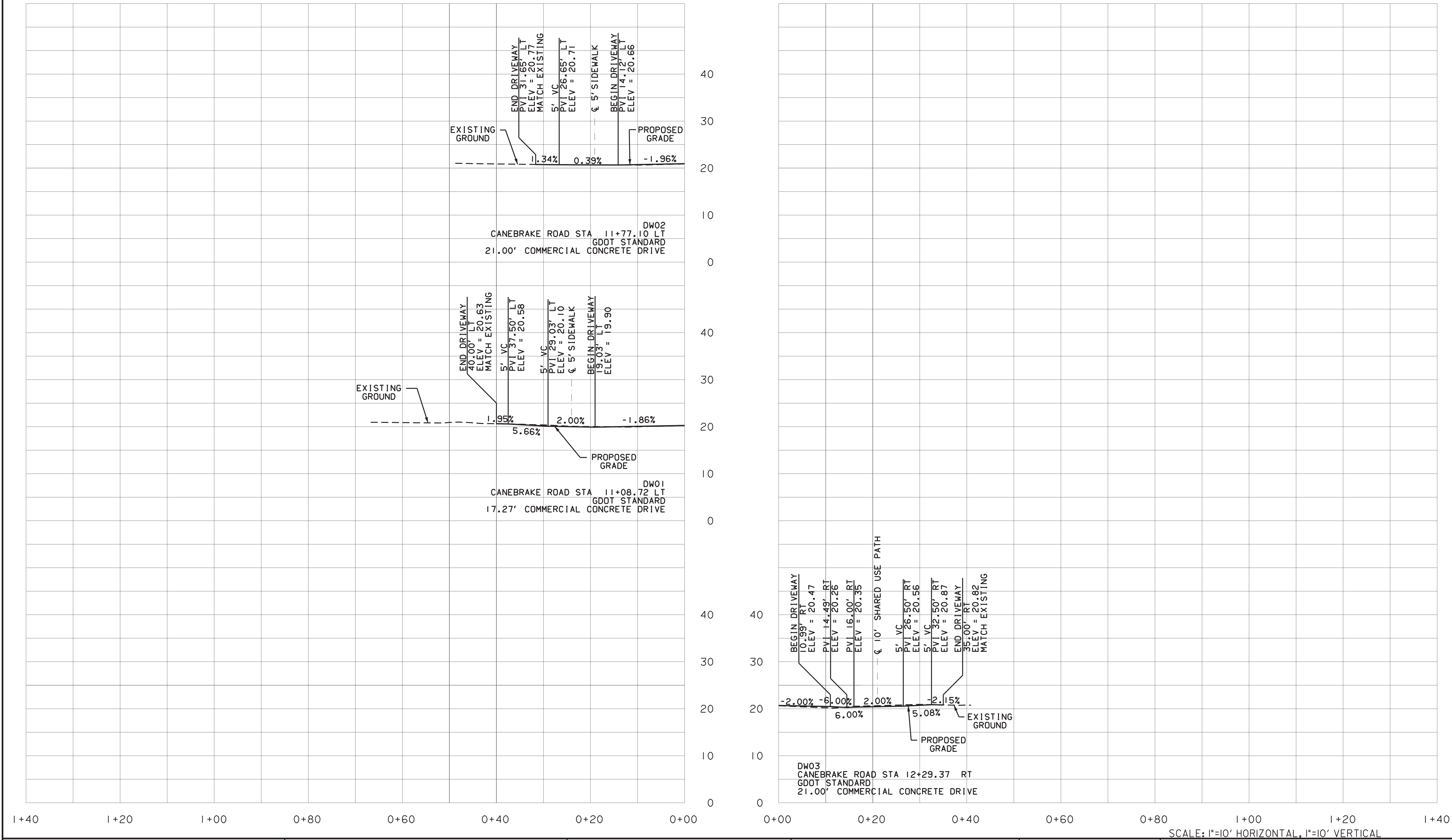
PROPERTY AND EXISTING R/W LINE	
REQUIRED R/W LINE	
CONSTRUCTION LIMITS	
EASEMENT FOR CONSTR & MAINTENANCE OF SLOPES	
EASEMENT FOR CONSTR OF SLOPES	
EASEMENT FOR CONSTR OF DRIVES	

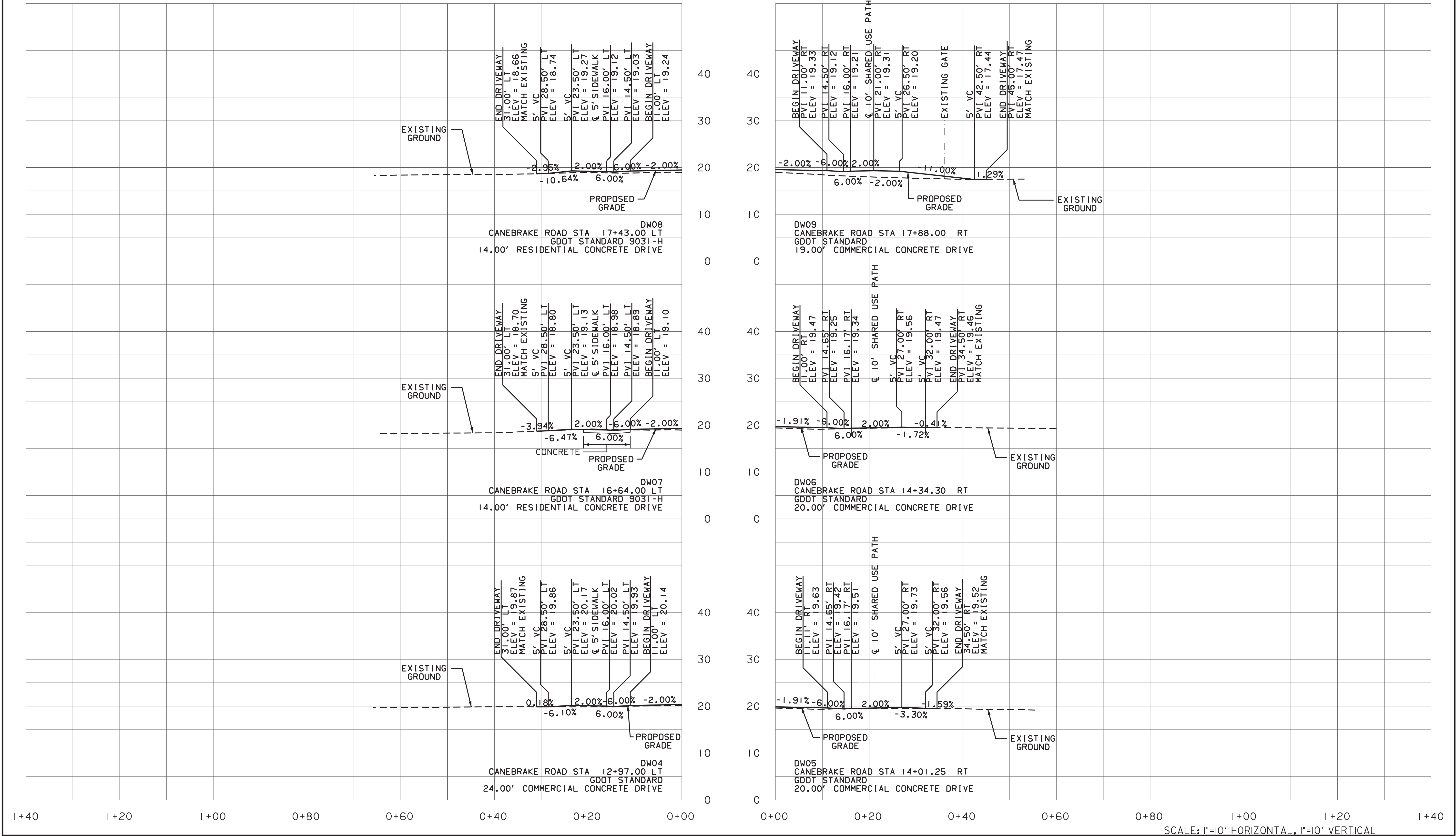


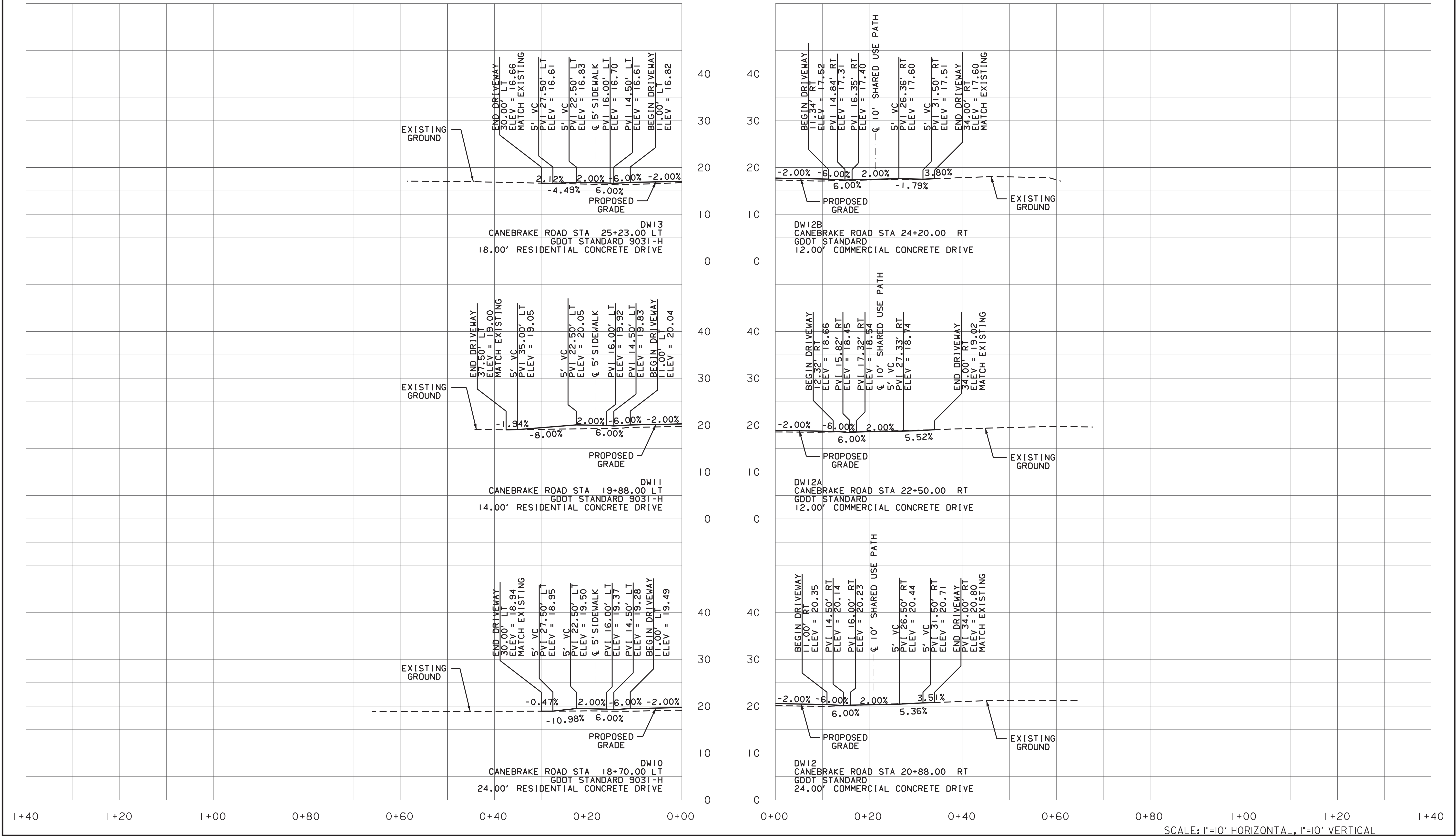
REVISION DATES		
08/03/18		

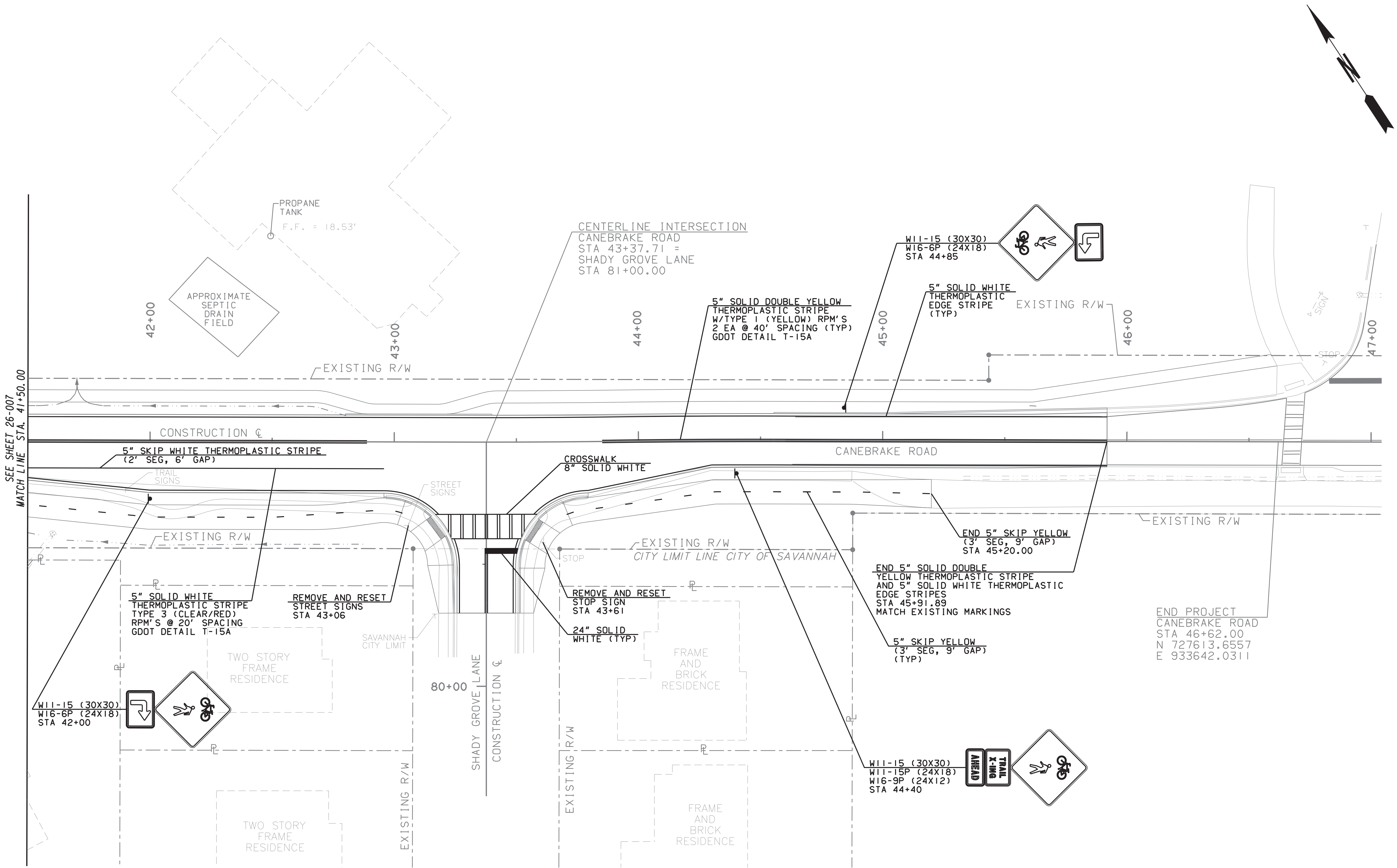
CHATHAM COUNTY, GEORGIA
MAINLINE PLAN
CANEBRAKE ROAD IMPROVEMENT PROJECT
DRAWING No. 13-003











PROPERTY AND EXISTING R/W LINE

REQUIRED R/W LINE

CONSTRUCTION LIMITS

EASEMENT FOR CONSTR

& MAINTENANCE OF SLOPES

EASEMENT FOR CONSTR OF SLOPES

EASEMENT FOR CONSTR OF DRIVES

SCALE IN FEET

0

20

40

80

CHATHAM COUNTY

GEORGIA

REVISION DATES

08/03/18

CHATHAM COUNTY, GEORGIA

SIGNING AND MARKING PLANS

CANEBRAKE ROAD IMPROVEMENT PROJECT

DRAWING No.

26-008